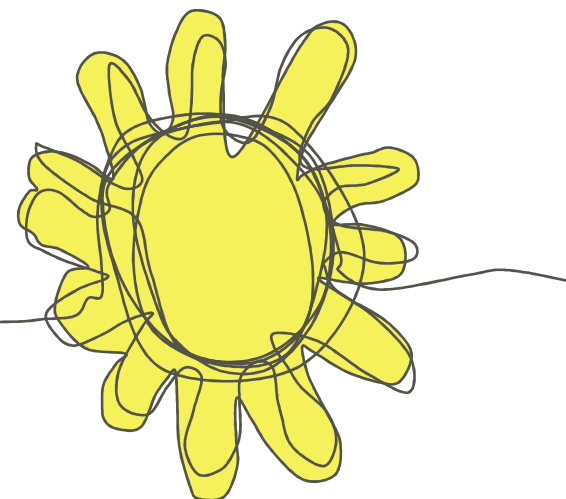


# The future of children's centres: Sustainability, funding and quality provision



---

Maureen Nuttall  
Business Development Manager

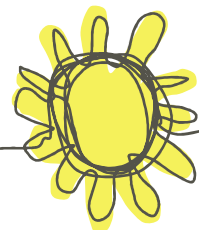
---

*as long as it takes*

# Objectives of presentation



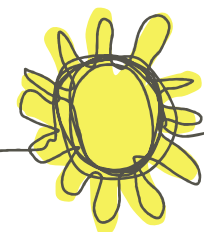
- Current environment and drivers
- Impact
- Sustainability
- Funding
- Quality provision
- Challenges
- Opportunities



# Current environment and drivers



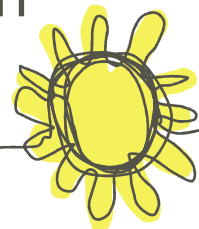
- Poverty
- Welfare reform
- Health reform
- Localism
- Safeguarding
- Revised EYFS
- Revised Ofsted inspection
- Evidence-based programmes
- Changes in funding for early intervention services
- Ministerial focus on early education and implementation of two year old offer, and workforce development



# Impact



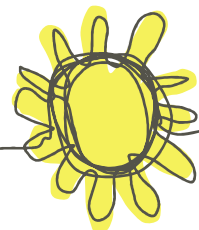
- 2007 NESS evaluation good news!
  - Improved child positive behaviour
  - Improved child independence and self regulation
  - Less harsh discipline from parents
  - Less home chaos, improved home learning environment
  - Parents making more use of local services
  - Higher rates of child immunisations
  - Fewer child accidents (last two could be timing)
  - Most important finding: no differences in subgroups
- King's College London (KCL, 2011) found an overall picture of '*children doing better*' following contact with Action for Children centre staff and the services



# Sustainability



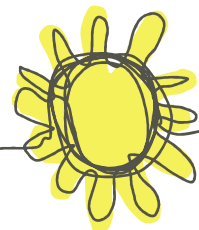
- The commissioning of children's centres must:
  - provide more emphasis on stability for children and families
  - support the delivery of evidence-based early intervention services
- Government must commit to developing an approach to funding that is underpinned by long-term planning and consistent support
- Importance of providing stability and continuity to the families and communities who need it the most.



# Funding



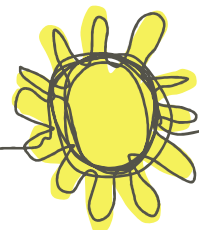
- End of Early Intervention Grant
- Money reallocated to funding free early education entitlement and Adoption Reform Grant
- Cuts to budgets vs increased need:
  - Action for Children Red Book 2012:
    - Almost half (48%) of children's centre managers sampled had cuts in their budgets
    - In the past six months, 70% of services have seen an increase in the severity of issues families are facing
- Has to result in clarity of need and more focussed provision



# Quality provision



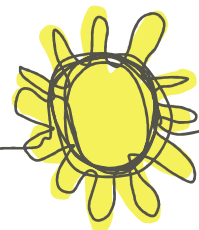
- High quality services drive improved outcomes for children
- Must have good quality practitioners and leadership
- Qualifications, training, resources and support networks are all crucial elements to ensure quality provision
- Joined-up working – e.g. integrated review at 2 ½ years



# Challenges



- True focus on outcomes
- More for less
- Local variation in implementation
- Uncertainty of key partners – e.g. health

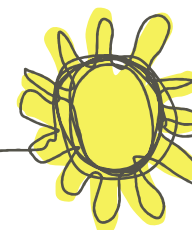




# Opportunities



- Reconceptualise children's centres
- Early intervention
- Partnership working
- Innovation
- Use children's centres to raise the profile of early years for children



# Thank you

