

Leicester Sports Partnership Trust



improving people's lives across the city



A legacy from the 2012 Olympic & Paralympic Games

**Rory Underwood MBE      Chair of the Leicester Sports Partnership Trust Board**



A handwritten signature of Rory Underwood in black ink.



# DCMS DfE DOH

**Physical Activity**

**COMMUNITY SPORT**

**Sport England**

**NGB's**

**CSP's**

**Local Authorities**

**ELITE SPORT**

**UK Sport**

**Sports  
Coach  
Uk**

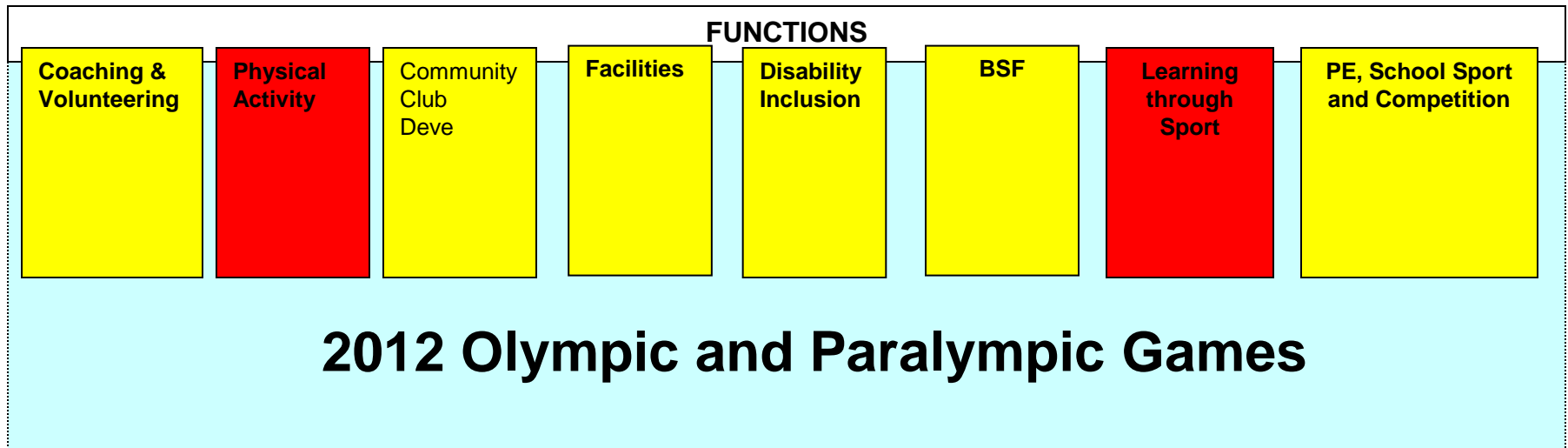
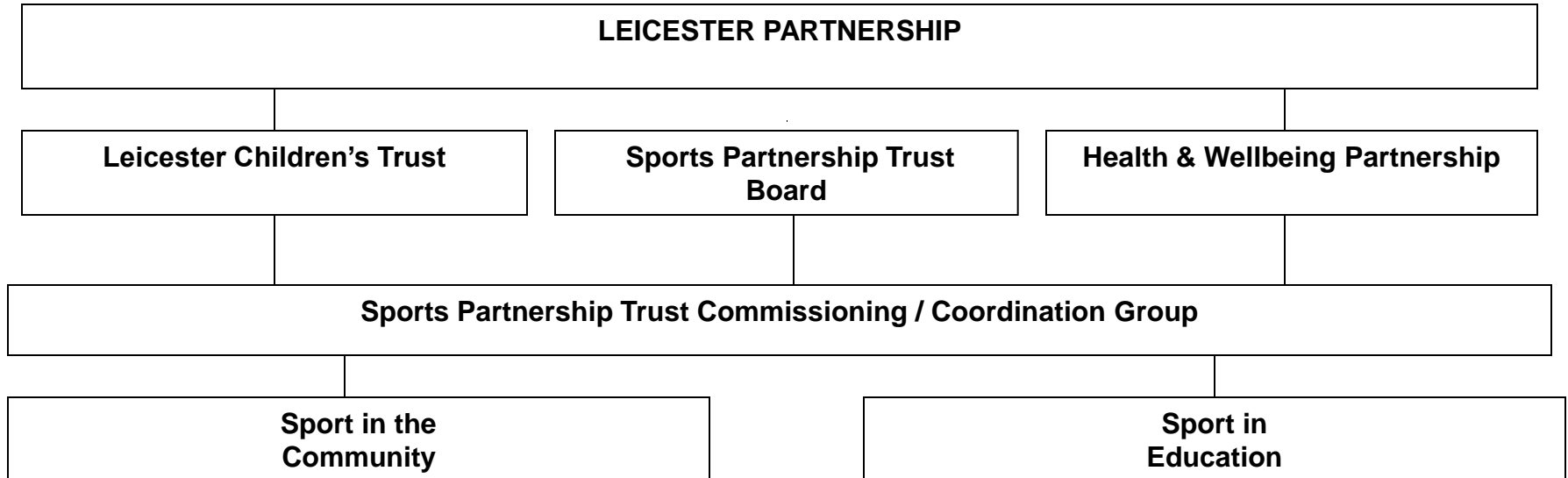
**Youth Sport Trust**

**SCHOOL SPORT**

**Volunteers**



# Leicester City Sporting Landscape - Now





# Leicester Sports Partnership Trust

## Vision

“Leicester City, the most active city in England”

## Mission

“To work in partnership to provide high quality inclusive opportunities for the people of Leicester, enabling them to achieve their potential through sport and physical activity”



# Strategic Priorities

1. Raising attainment, achievement and aspirations of young people through high quality Physical Education, Sport and Competition.
2. Improving Health and Wellbeing through Sport and Physical Activity interventions.
3. Create a thriving sustainable community club, coach and volunteer infrastructure
4. Develop sustainable facilities to meet the future needs of the people of Leicester
5. Develop a sustainable and fit-for-purpose workforce
6. Use the London 2012 Olympic and Paralympic Games to inspire the people of Leicester to take part in sport and physical activity

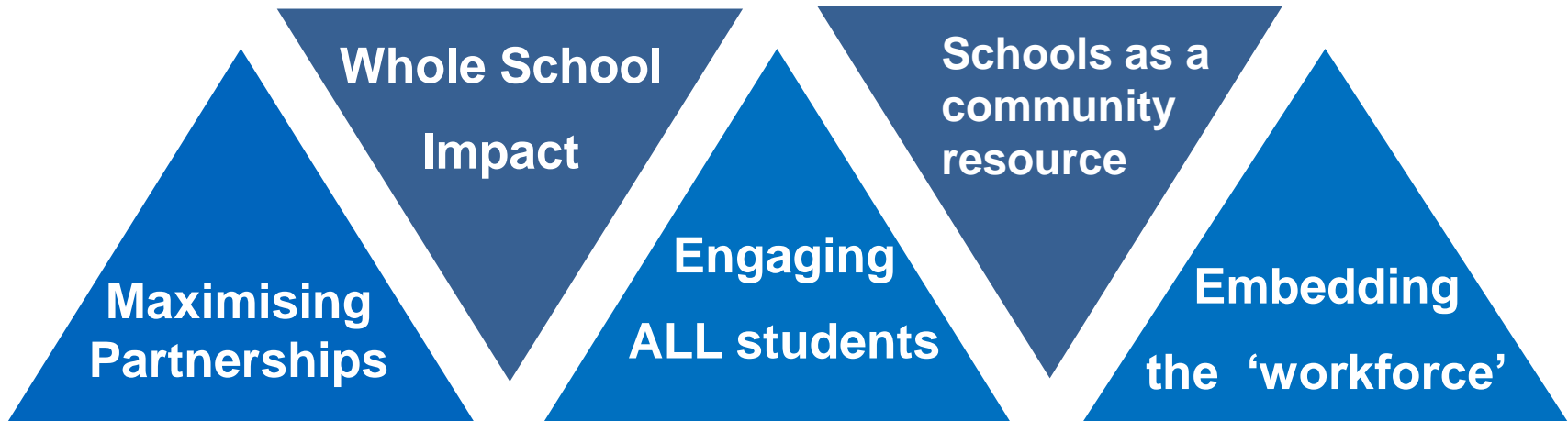


# School Sites: A Vehicle for Sports Development





# Creating a Sustainable Strategy



## School Sites - A Vehicle for Sports Development





# Additional Funding for Sports Facilities on School Sites

<i>School</i>	<i>Sport / Facility</i>	<i>National Governing Body of Sport Funding</i>	<i>New Opportunities Funding</i>	<i>Football Foundation Funding</i>
Crown Hills	Cricket	£920,000		
Sir Jonathan North & Lancaster	Tennis	£483,000	£1,239,047	
New College	Gymnastics	£500,000		
	Football			£1,623,310
Soar valley	Netball	£370,000		
	Astro Turf Pitch		£510,453	
Babington	Badminton	£198,000		
Fullhurst	Sports hall		£970,056	
Moat	Astro Turf Pitch		£379,325	
City of Leicester	Sports Hall		£1,339,847	
Judgemeadow	Football			£1,181,400
Ellesmere / Riverside site	Football			£1,754,801
<b>TOTAL:</b>		<b>£2,471,000</b>	<b>£4,438,728</b>	<b>£4,559,511</b>





# Case Study: New College Leicester

- Community college serving over 900 students
- Deprived area of the City
- Failing school academically
- Frustrated by lack of support
- ‘Take the bull by the horns’

**New College Leicester**



“Good Progress for All”



# New College Sporting Partnerships





# New College: Outcomes

- 700% increase in A-C GCSE grades
- Increased attendance and decreased truancy
- Less anti-social behaviour
- Improved community relationships
- Developed relationships with local Primary Schools



# Case Study: New College Leicester

“New College have used sport and the improving sports facilities to tell students you are really worth the best we can offer. You are worth all the investment and you deserve to have the best because we believe in you. Sport has help us to remind students that they can be proud of who they are and where they are from.”

**Jane Brown**, Headmistress, New College



**New College Leicester**



“Good Progress for All”

Leicester Sports Partnership Trust

**one**leicester  
one team one goal

improving people's lives across the city



# ANY QUESTIONS



For more details contact:

**Wayne Allsopp**

**Strategy Lead for PE and School Sport**

**Leicester City Council**

**[wayne.allsopp@leicester.gov.uk](mailto:wayne.allsopp@leicester.gov.uk)**

**0116 222 2607**

**07506675451**



