

The Epidemiology of Homelessness and Exclusion

Dr. Stephen Hwang

Division of General Internal Medicine, University of Toronto
Research Scientist and Chair in Homelessness, Housing, and Health,
Centre for Research on Inner City Health, St. Michael's Hospital, Toronto

International Symposium on
Homelessness, Health, and Inclusion
March 5, 2014

Homelessness in England

- About 2,400 rough sleepers each night
- 37% increase over 3 years
- 113,000 households applied for homelessness assistance
- 11% increase over 2 years

Crisis 2013

Homelessness in Canada

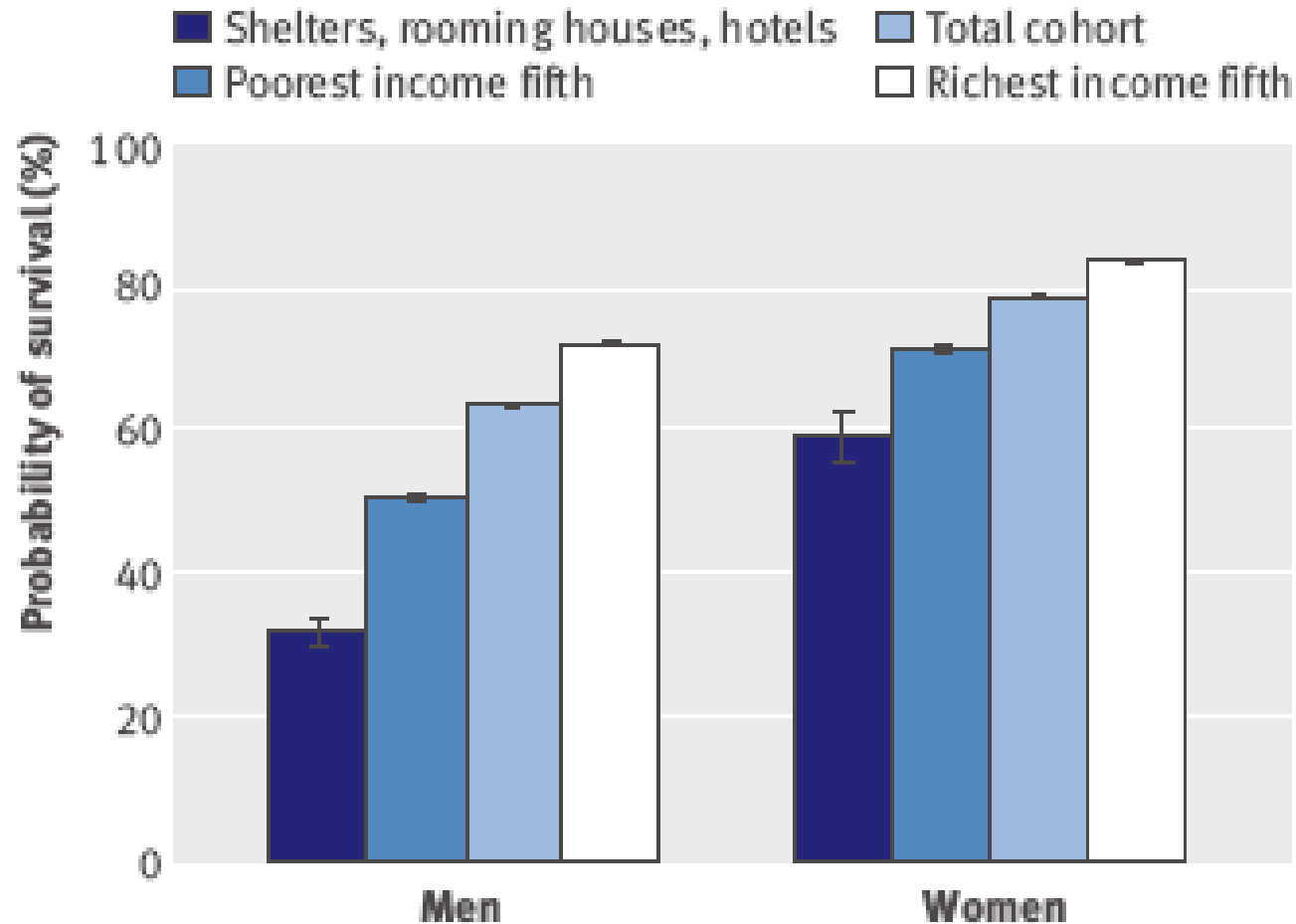
- >30,000 people homeless each night
- 150,000 people stay at a homeless shelters each year
- 2% of all Canadians have been homeless in the last 5 years

National Shelter Study 2005-2009, HRSDC 2012
The State of Homelessness in Canada, CHRN 2013

What is the Solution?

- **Health Care?**
- **Housing and Supports?**
- **Attacking Social & Economic Exclusion?**

Life Expectancy

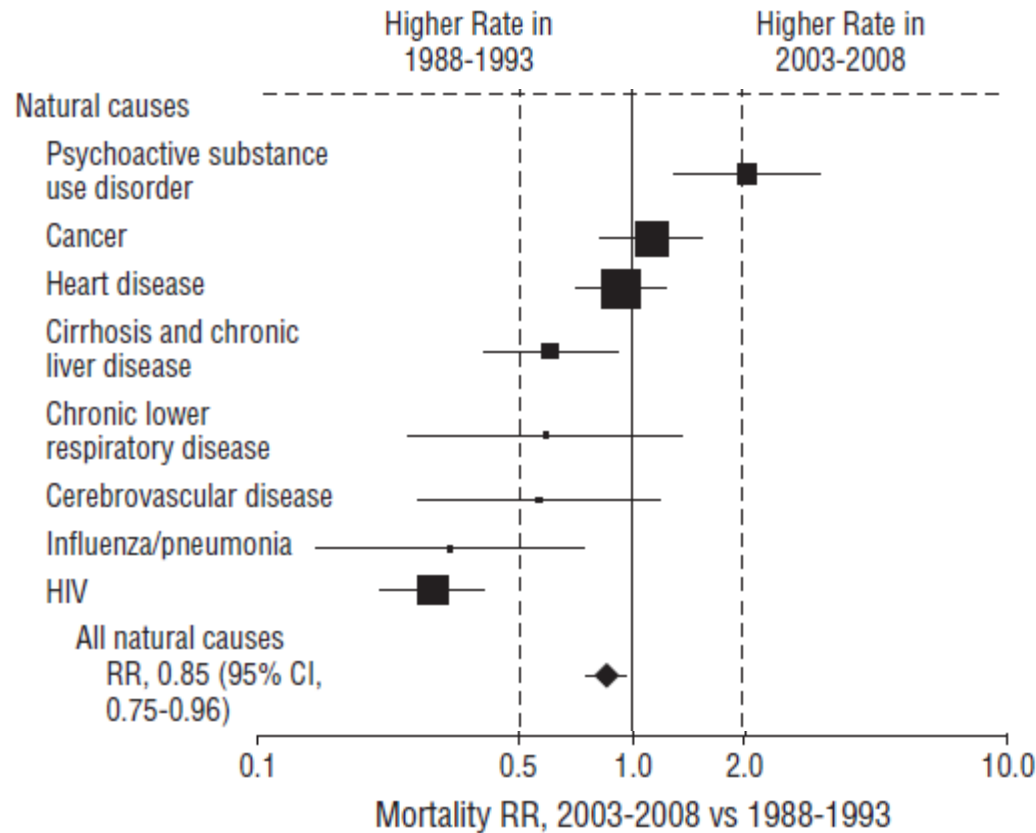


Hwang. BMJ 2009

What is the Solution?

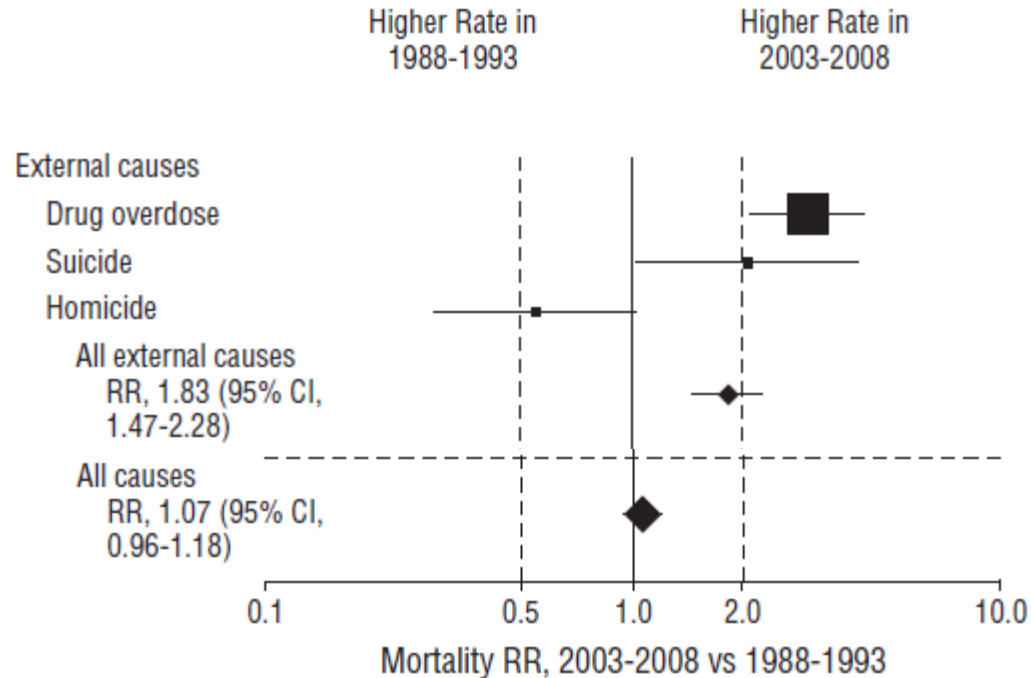
- Health Care?

Changes in Mortality Rates



Baggett, JAMA Int Med 2013

Changes in Mortality Rates



Baggett, JAMA Int Med 2013

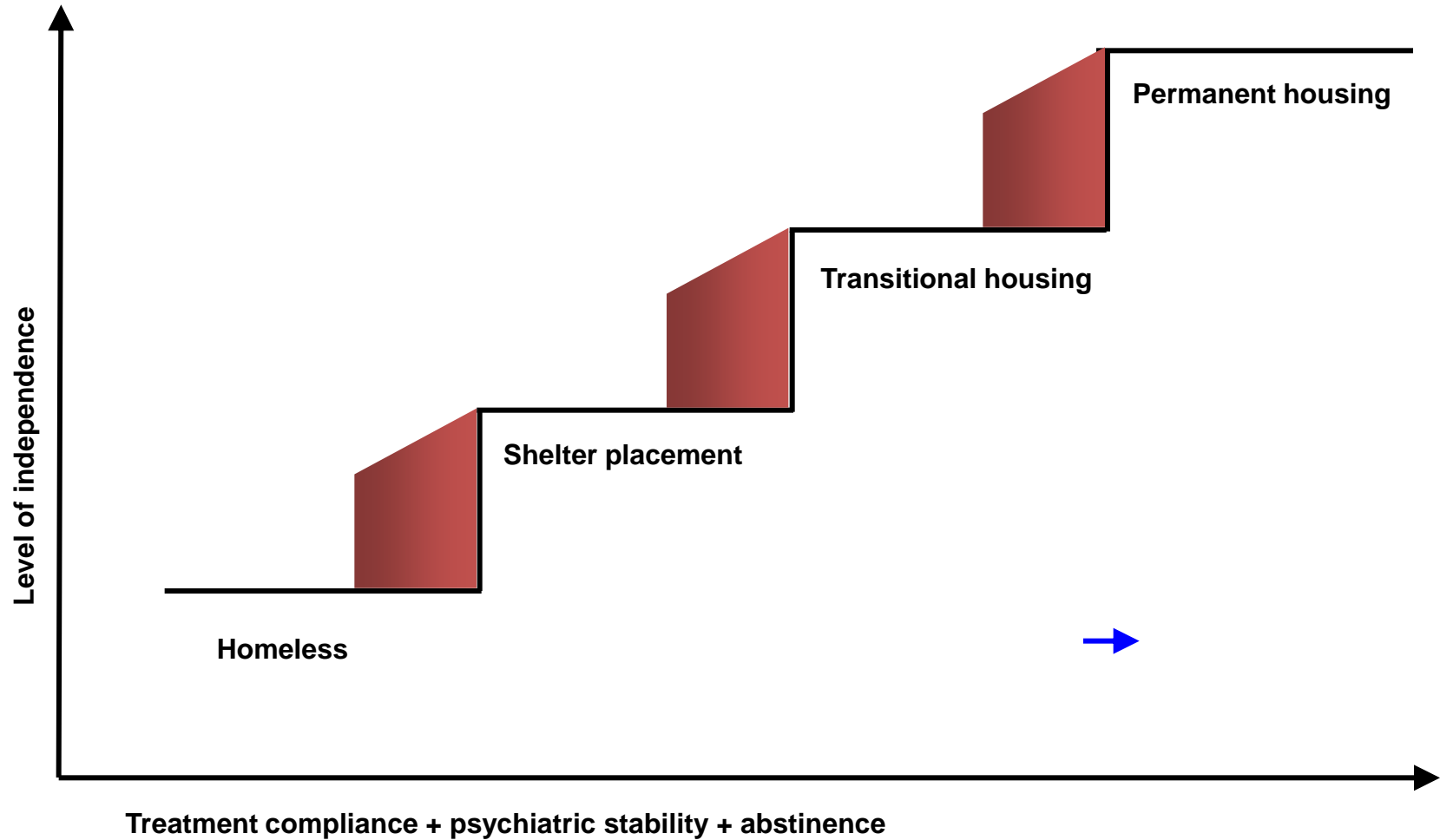
What is the Solution?

- Health Care?
- Housing and Supports?

The At Home/Chez Soi Study

- Randomized controlled trial of Housing First interventions for people who are homeless and have serious mental illness
- Sponsored by Mental Health Commission of Canada

The Housing First Model



The Housing First Model

Housing:
Scattered-site
Apartments with Rent
Supplements

+

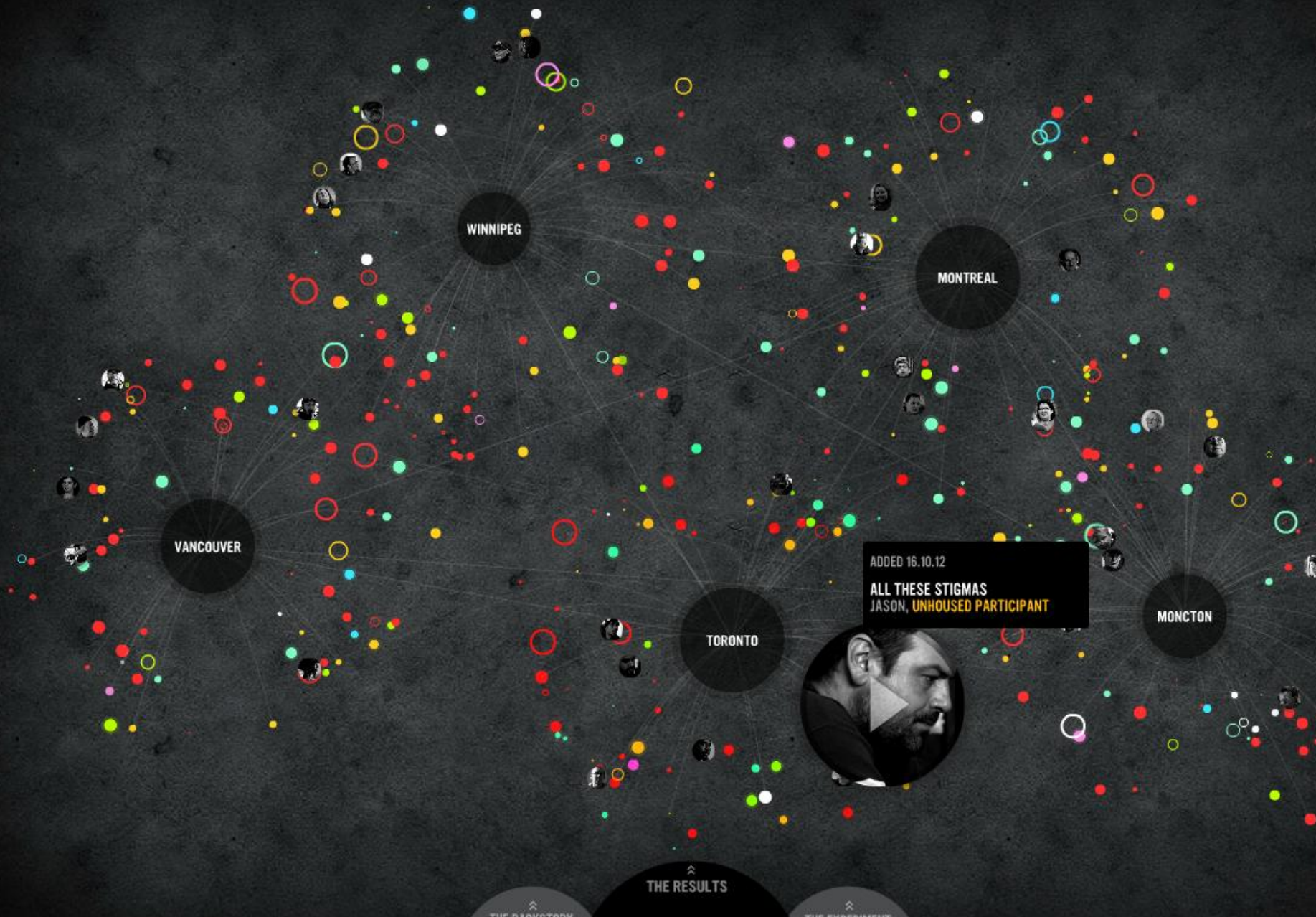
Support:
Assertive
Community
Treatment

Housing:
Scattered-site
Apartments with Rent
Supplements

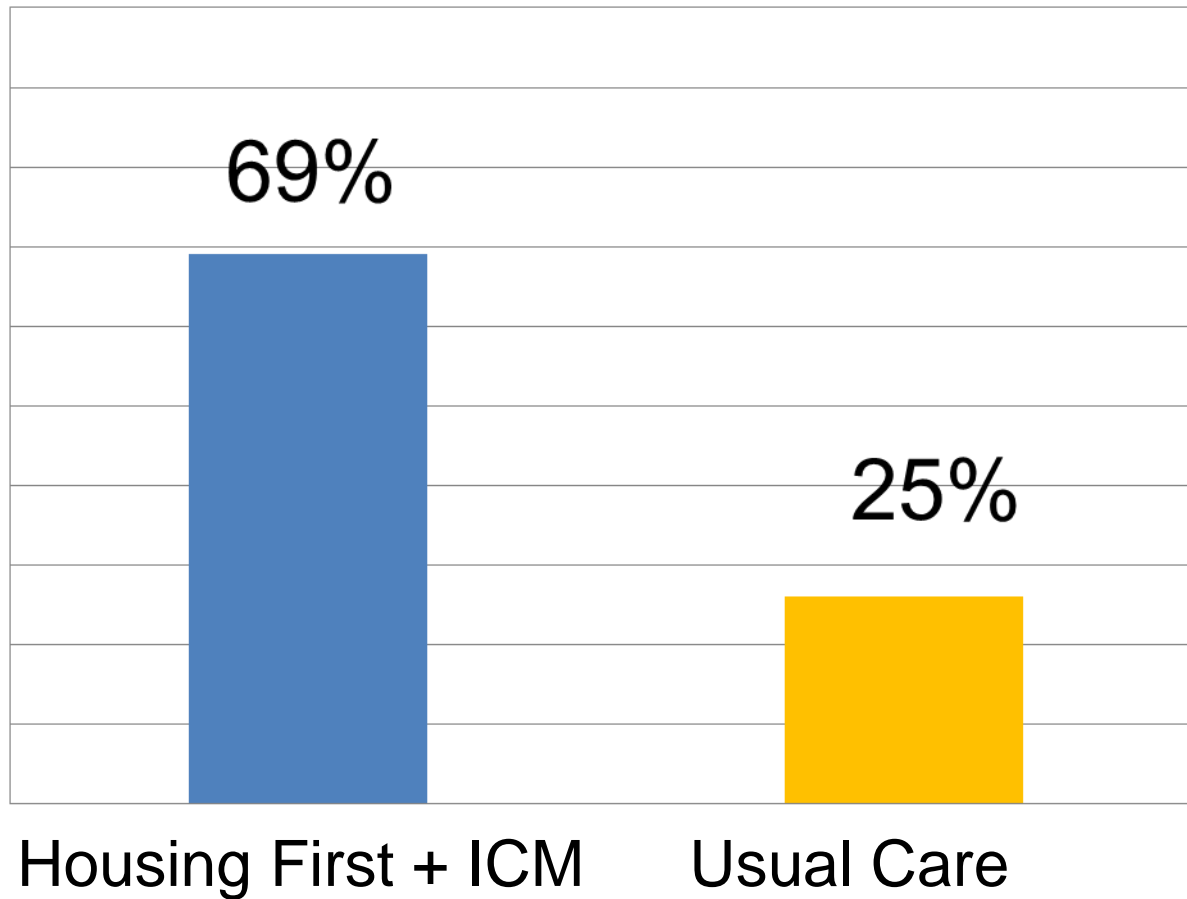
+

Support:
Intensive
Case
Management

athome.nfb.ca



Percentage of Time Housed



Life Expectancy



BMJ 2009

What is the Solution?

- **Health Care?**
- **Housing and Supports?**
- **Attacking Social and Economic Exclusion?**