



The Future for Hospice Care

Jonathan Ellis
Director of Public Policy & Parliamentary Affairs

TUESDAY 12 FEBRUARY 2013

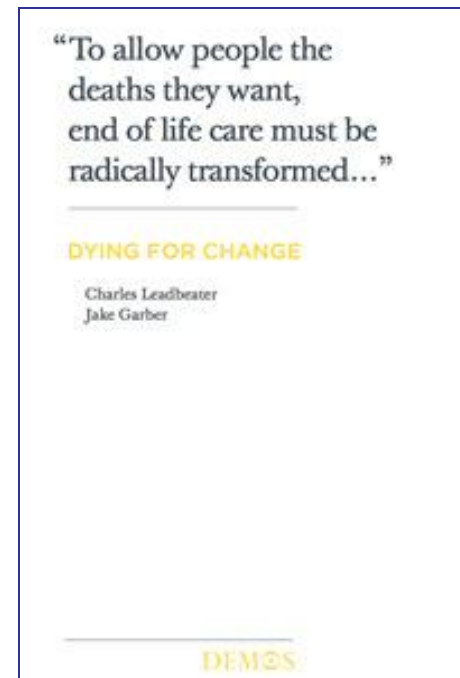
A perfect storm for hospice care?

- Increasing population demand
- Rising consumer expectations
- Reform of the health and social care system
- Increasing regulatory burden
- NHS funding under pressure
- Challenging fundraising environment
- New models of commissioning and competition

➔ How can we do more with less?

The need for radical change

- 2010 – “Dying for Change” proposed a radical change to the way that end of life care is delivered in the UK
- Important opportunities for hospices
- Major challenges envisaged in the future



<http://bit.ly/byaDSH>

Looking to the future

- To highlight the high quality of hospice care and urge its universal extension
- To provide hospices with a framework for more strategic and practical leadership within the delivery of care
- To help hospices meet the challenges of anticipated changes in demography and disease, as well as health and social care services



**HELP THE HOSPICES
COMMISSION**

into the future of hospice care

Looking to the future

- Help hospices adapt and innovate so they can provide the very best care and support in order to meet public need and expectation
- Help hospices navigate an uncertain future of proposed changes in policy and practice

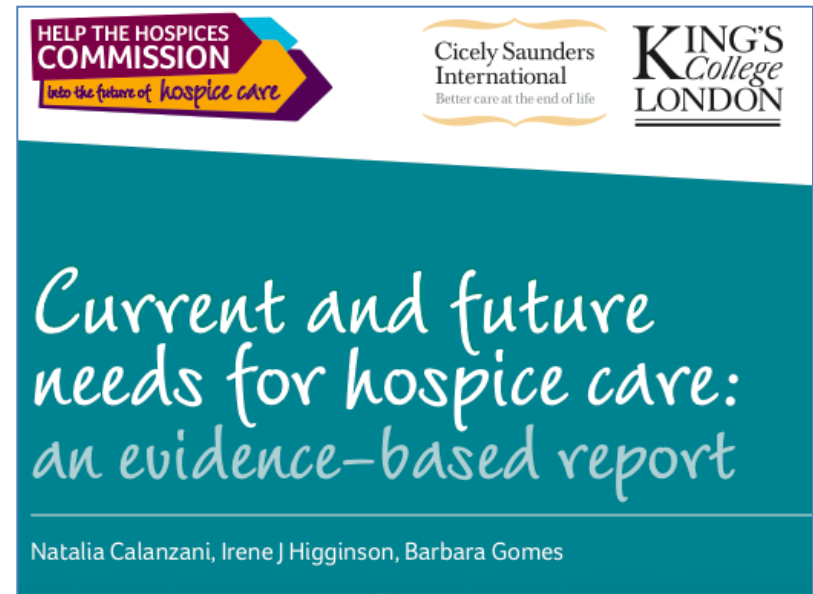


Key work streams

- Identifying the **unique offering** of hospice care
- Quantifying **future needs** for hospice care and appropriate future models of care
- Identifying the hospice **workforce**
- Identifying the future **funding** opportunities
- Identifying potential new **partnerships**
- Identifying **new approaches** to care
- Exploring the future of Hospice **education and research**

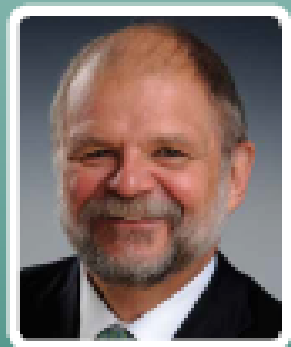
Epidemiological challenges

- Increasing numbers of people living with chronic illness and polypathology
- Growing numbers of people with dementia and other mental health conditions
- Increasing numbers of people who “survive” life threatening conditions – young adults, people with cancer
- The ongoing challenge of non cancer conditions



Be
proactive...

This is not the time for complacency. The challenges are too severe. It is a time for self assessment, clear thinking and strategic planning and action if hospice care is to continue to improve the experience of those approaching the end of life.



Greg Parston

Be innovative

- Prepare for new groups of users
- Plan to care for them much earlier in their trajectories
- Think about caring for them in alternative settings and in new ways
- Shift the focus of your care to a different set of needs
- Change your workforce
- Sell hospice as a solution

As a society we are ill-prepared for how we will die in the next two decades.



Charles Leadbeater

Invest in volunteers

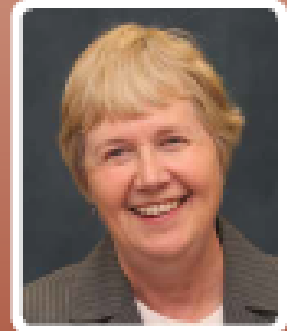
Volunteers are a vital part of the future of care. They should be at the heart of the health service – a humanising influence; a more personal and involved way of operating. We must work together to achieve this.

Baroness Julia Neuberger
DBE



Consider new roles for volunteers

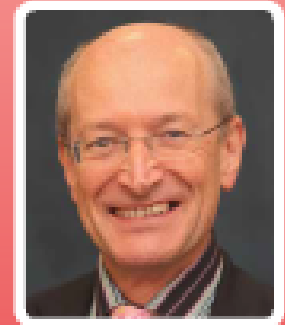
All people with a limited time to live should be offered a volunteer companion to be with them and their close family or friends on that journey. The volunteer should be trained for this role and have ongoing support from the local hospice.



Sarah Whitfield

Consider new partnerships

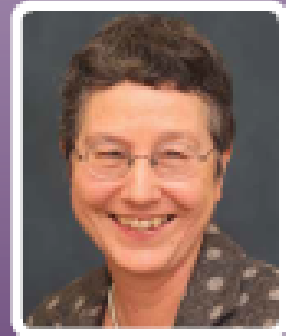
The future of hospice care is hospices enabling a multitude of different communities – family, friends, neighbours, work colleagues, church, membership organisations – to do the caring of those at the end of life



Peter Holliday

What does the future look like?

The future for hospice care will challenge existing models of service delivery. It will demand business skills, new partnerships and innovation, firmly linked to our founding values of compassionate communication, confident care and community engagement.



Dame Barbara Monroe