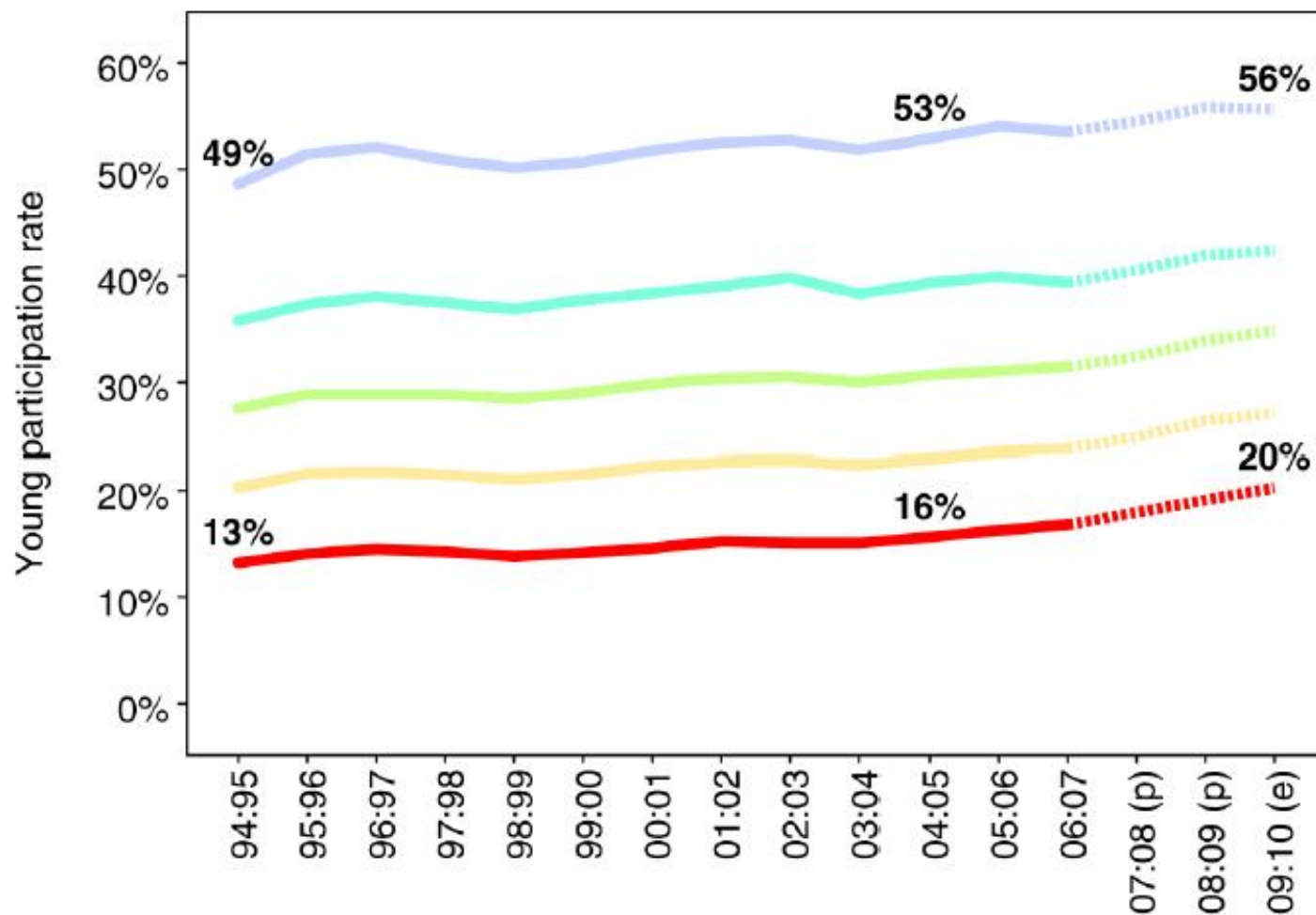


Summer Schools and Outreach to Improve Access

James Turner, Director of Programmes, Sutton Trust
30 October 2012

Access to higher education by postcode area – 15 year trend



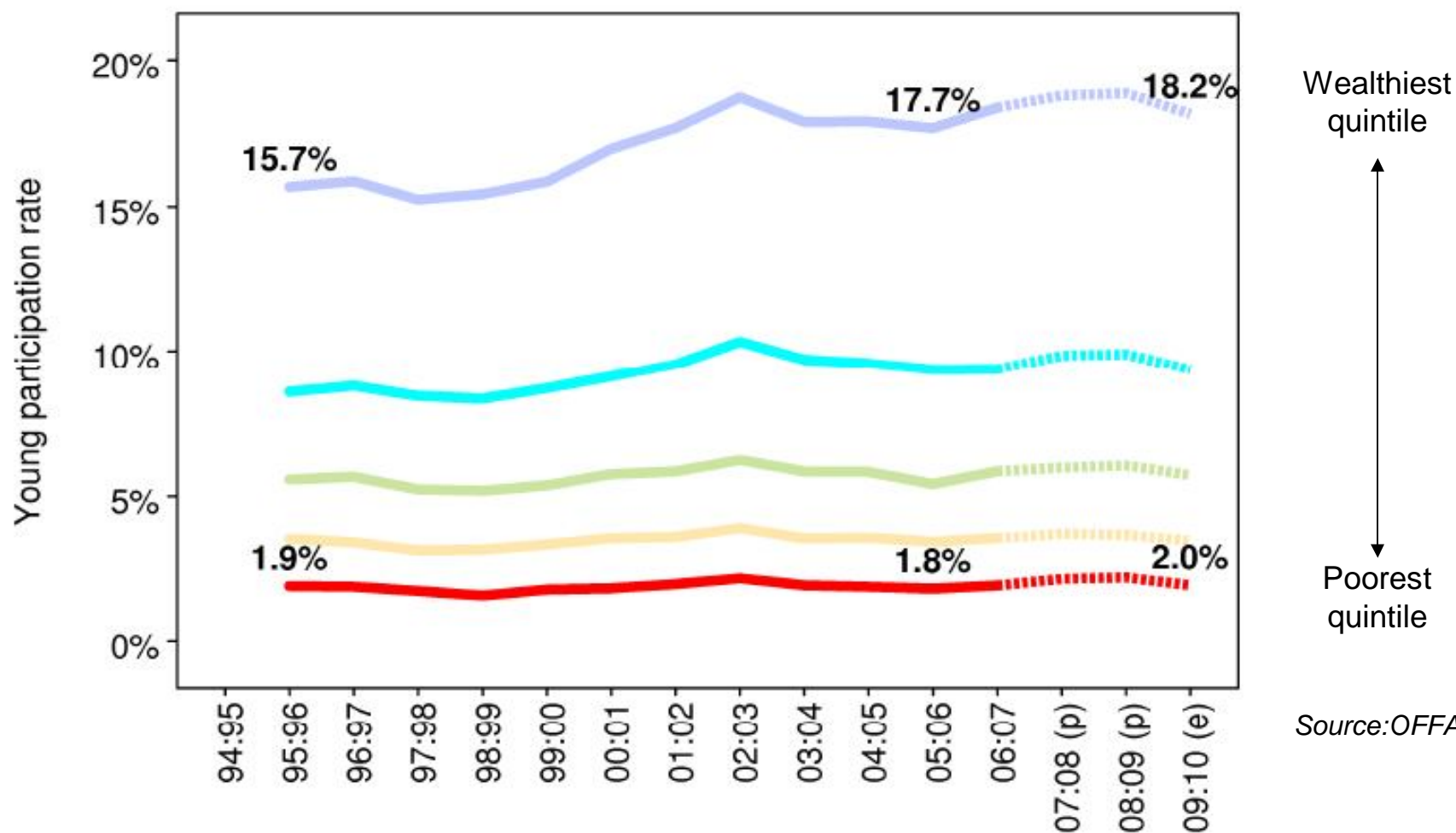
Wealthiest
quintile



Poorest
quintile

Source: OFFA

Access to the 30 most selective universities by postcode area – 15 year trend



Need for evidence is greater than ever

- Lack of progress on some measures
- Tight public spending environment – value for money counts

But

- lacking rigorous academic evaluations in this area, e.g. RCTs, large-scale longitudinal trials

However

- Shouldn't be paralysed into inaction
- Much good practice learnt over years
- Promising individual projects – 'Beacons'

Outreach is key to widening access

- More evidence supporting outreach than financial aid ... so far at least
 - 2009 Offa research: bursaries didn't impact on student behaviour
- New fees regime may have altered picture
 - But no evidence around fee waivers etc
- Targeted outreach grows talent pool
- But just £100m vs £600m of OFFA spend

Sutton Trust Approach

- Funded well over 100 programmes reaching 100,000s of children throughout age range
- In HE access:
 - Shorter programmes at key junctures to raise aspirations and 'switch' choices;
 - Sustained programmes, starting earlier, boosting both attainment and aspirations
- Supporting 'non-privileged' as well as disadvantaged, teachers as well as students
- Balance of costs vs benefits

Sutton Trust Programmes – 1

UK Summer Schools

- 2,000 places a year, across 9 universities
- Subject-specific residential events
- Prioritises first generation student from low attaining schools
- Individual autonomy for universities in common framework for PR, evaluation and monitoring
- Many evaluations over fifteen years:
 - Three quarters go to selective universities – 50% up-lift compared to control group
 - Particular benefits to host universities
 - 14:1 return on financial investment

Sutton Trust Programmes – 2

Reach for Excellence

- Example of sustained initiative over sixth form: master-classes, advice sessions, summer school, mentoring
- Piloted at Leeds University, 400 students over three cohorts
- Now embedded at the university
- Targets those from homes below £25k of income and first generation
- Independent five year NFER evaluation:
 - Participants more likely to go to on HE
 - Twice as likely as control group to go to research intensive university 45% vs 21%

Sutton Trust Programmes – 3 STAR

- Piloted at Leeds and Exeter Universities – 150 students
- Innovative approach:
 - earlier start
 - guaranteed ‘pathway’ to a reduced offer
 - Not the ‘usual suspects’ – objective student selection within targeted schools
- Evaluation by Durham University
 - Randomised Control Trial pathfinder
 - Engaged new schools and students
 - Some transformative stories
 - High attrition rates
 - Time and resource intensive

Conclusions

- Outreach has contributed to progress in HE access, despite swimming upstream
- Developing an evidence base is crucial – **Sutton Trust Toolkit** forthcoming from Durham University
- Too much activity going on - confusing landscape for teachers, parents and students; small projects harder to evaluate
- Developing coordinated programmes should be a priority
- Tension between reaching right groups and showing big impacts to sponsors and management
- Contextual admissions also an important element...