

# The Work Programme and Ex-offenders

---

17<sup>th</sup> May 2012

Abi McDonald

Senior Business Development Manager, Justice

Ingeus



[www.ingeus.co.uk](http://www.ingeus.co.uk)

# Ingeus' Work Programme Delivery



7 contract package areas  
as prime

1 contract package area as  
subcontractor

75 Ingeus offices

Over 110 private, public  
and third sector  
subcontractors

Over 154,000 people  
supported since June 2011

Approx 25% of all clients  
has a criminal conviction



[www.ingeus.co.uk](http://www.ingeus.co.uk)

# The Work Programme

- Government's flagship programme for long-term unemployed claimants
- Black box approach – freedom for service providers to innovate and focus resources
- Payment by results – sustained job outcomes
- Differential payments according to benefit type
- 5 year contracts, 18 different primes each with extensive supply chains

## Day 1 Referrals (PG9)

- 75% of offenders leaving prison claimed an out of work benefit within 2 years (DWP)
- Offenders claiming JSA on release from prison in 2008 spent 40% more time on benefits over the next 3 years than the average claimant (DWP)

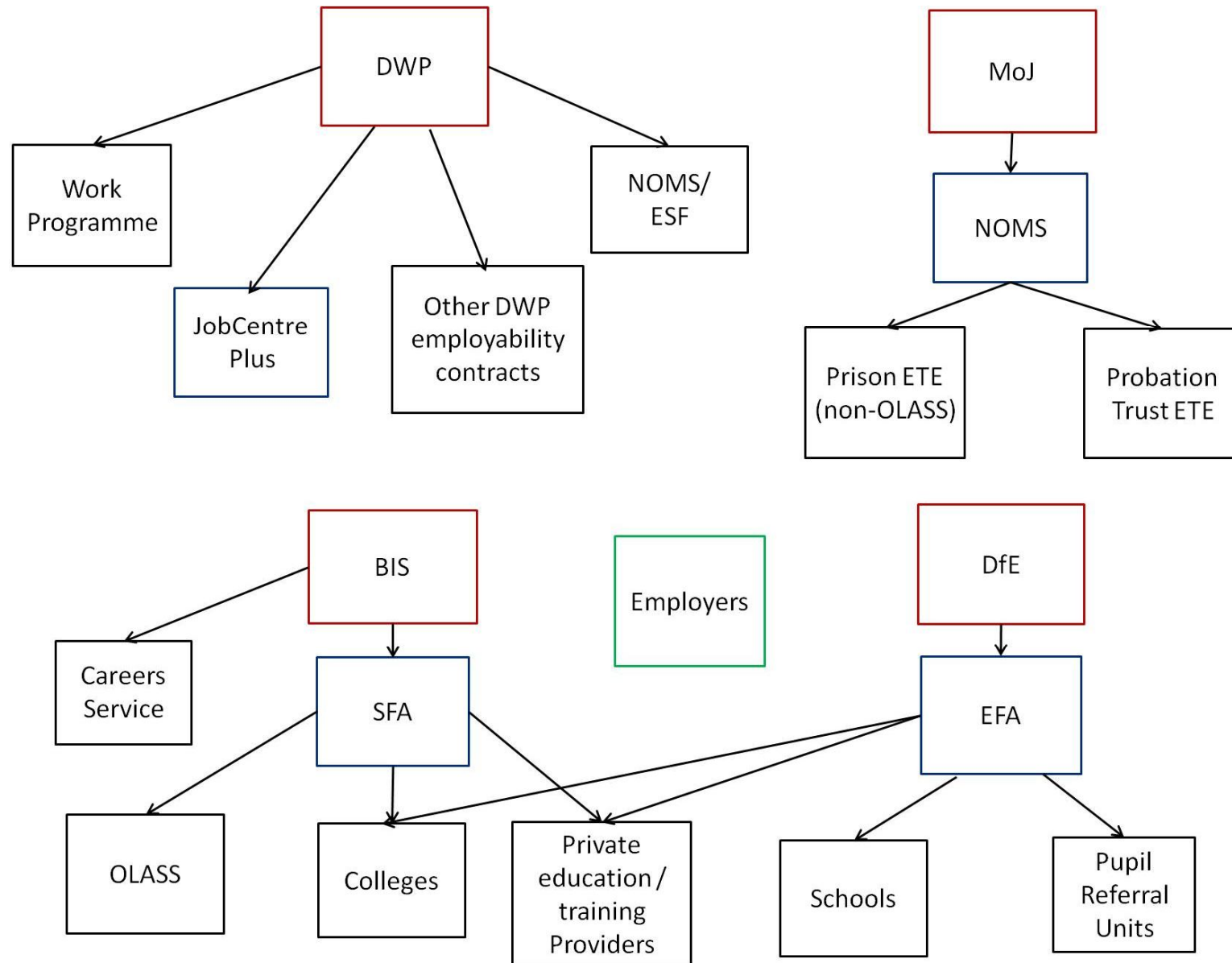
Since February 2012 –

- A prisoner can make a claim to JSA and be referred to the Work Programme before he/she leaves prison
- Ingeus is expecting to receive approximately 6,400 Day 1 referrals each year



[www.ingeus.co.uk](http://www.ingeus.co.uk)

# Offender Learning, Skills and Employability Landscape



# Improving the journey

## Prison

- Careers Advice
- OLASS
- Other work / learning opportunities
- NOMS/ESF
- Employment and Benefit Advisor



## Post release

- Probation
- JobCentre Plus
- Work Programme
- NOMS/ESF
- Learning / training

What we can do immediately

- 1.Planning to align provision
- 2.Making it work for delivery staff
- 3.Providing an enhanced experience for the ex-offender

The future vision .....