



*The Royal College of*  
**Midwives**

# Valuing Midwives: Improving Outcomes

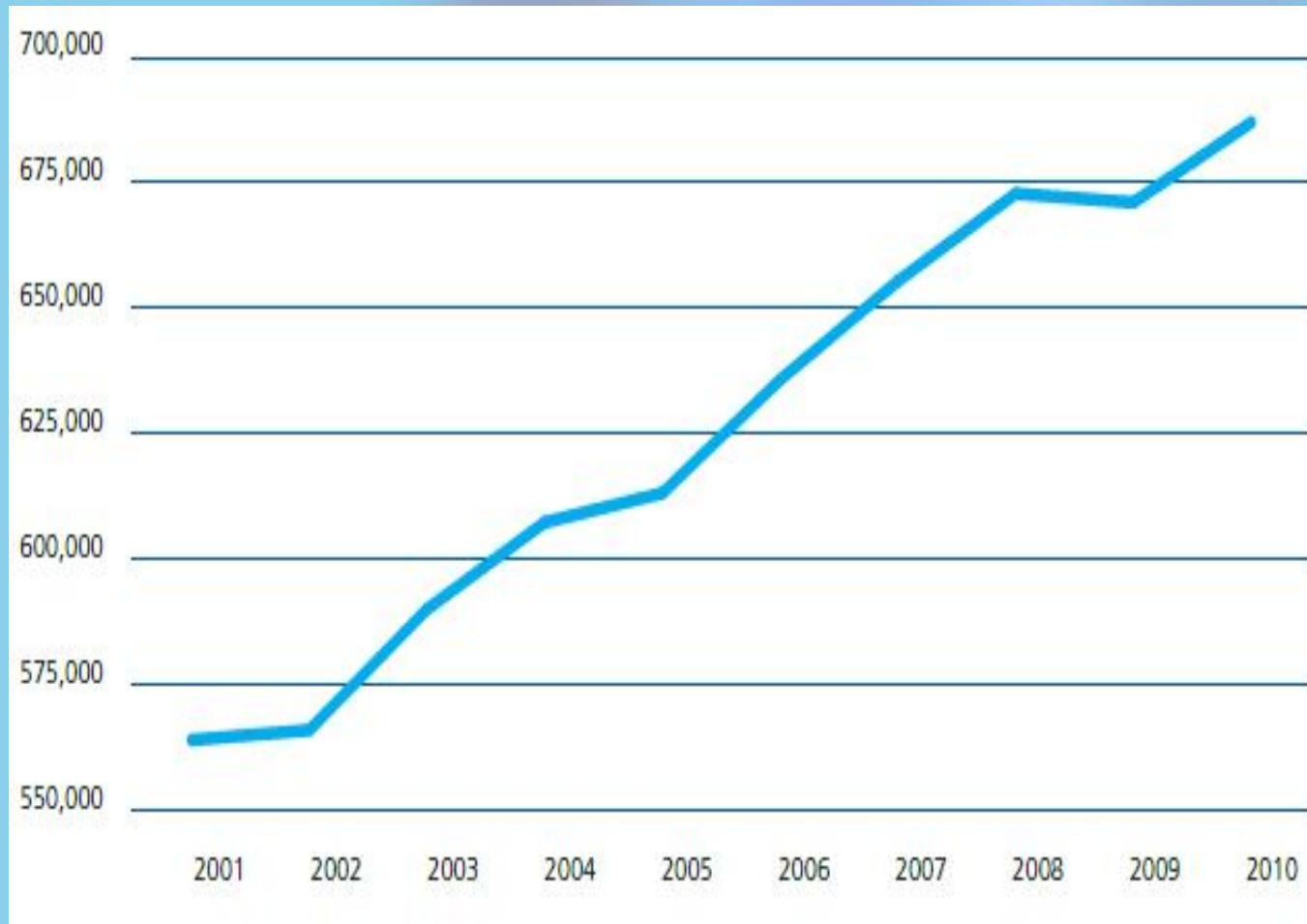
Professor Cathy Warwick CBE

15 November 2011



The Royal College of  
Midwives

# Births in England



**22%**  
increase in babies  
born between  
2001 and 2010

Number of live  
births, England

Source: the Office for  
National Statistics



*The Royal College of*  
**Midwives**

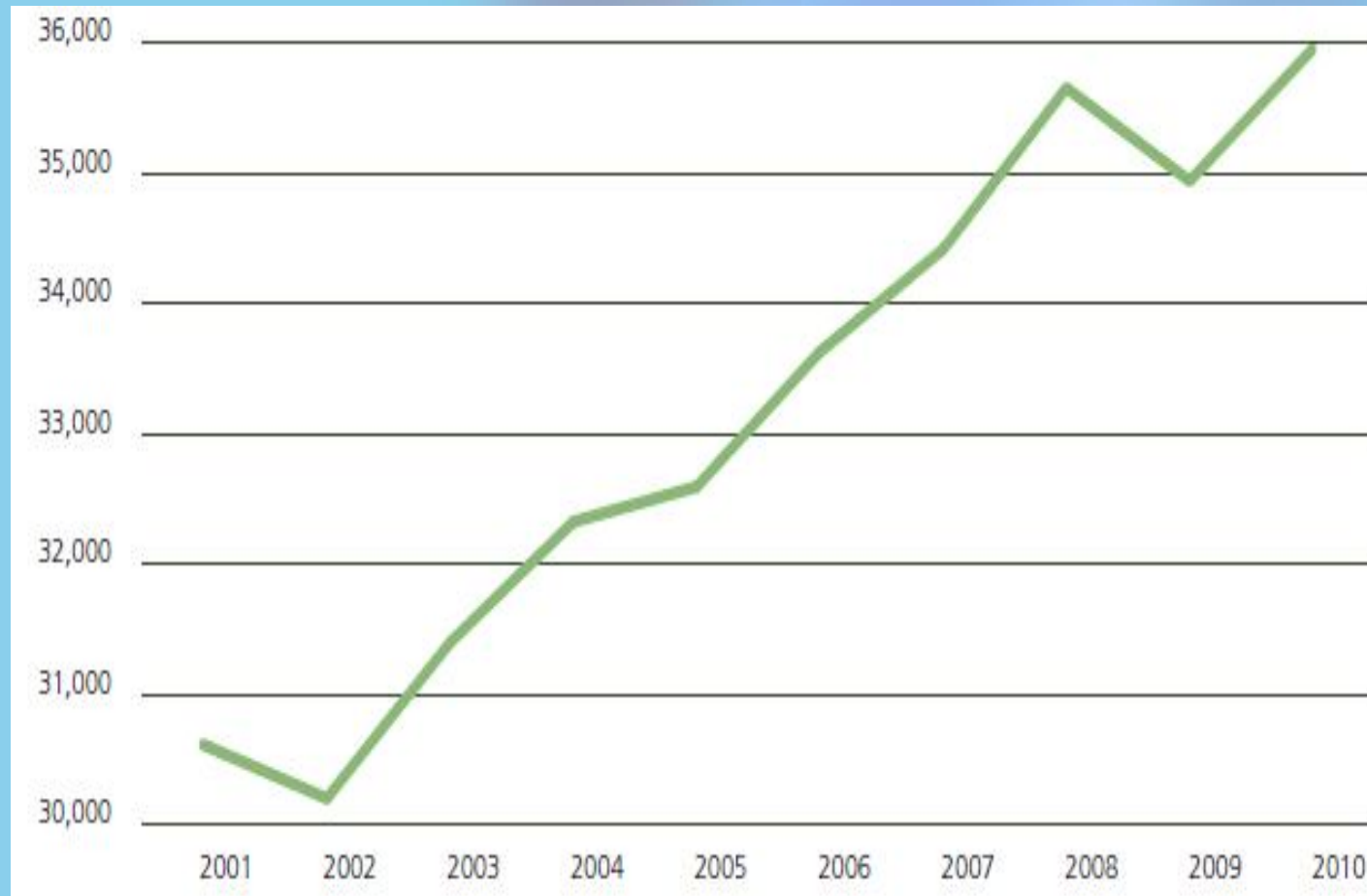
# Births in Scotland





The Royal College of  
Midwives

# Births in Wales



**33%**  
rise in births in  
Cardiff between  
2002 and 2010

■ Number of live  
births, Wales

Source: StatsWales



The Royal College of  
Midwives

# Births in Northern Ireland

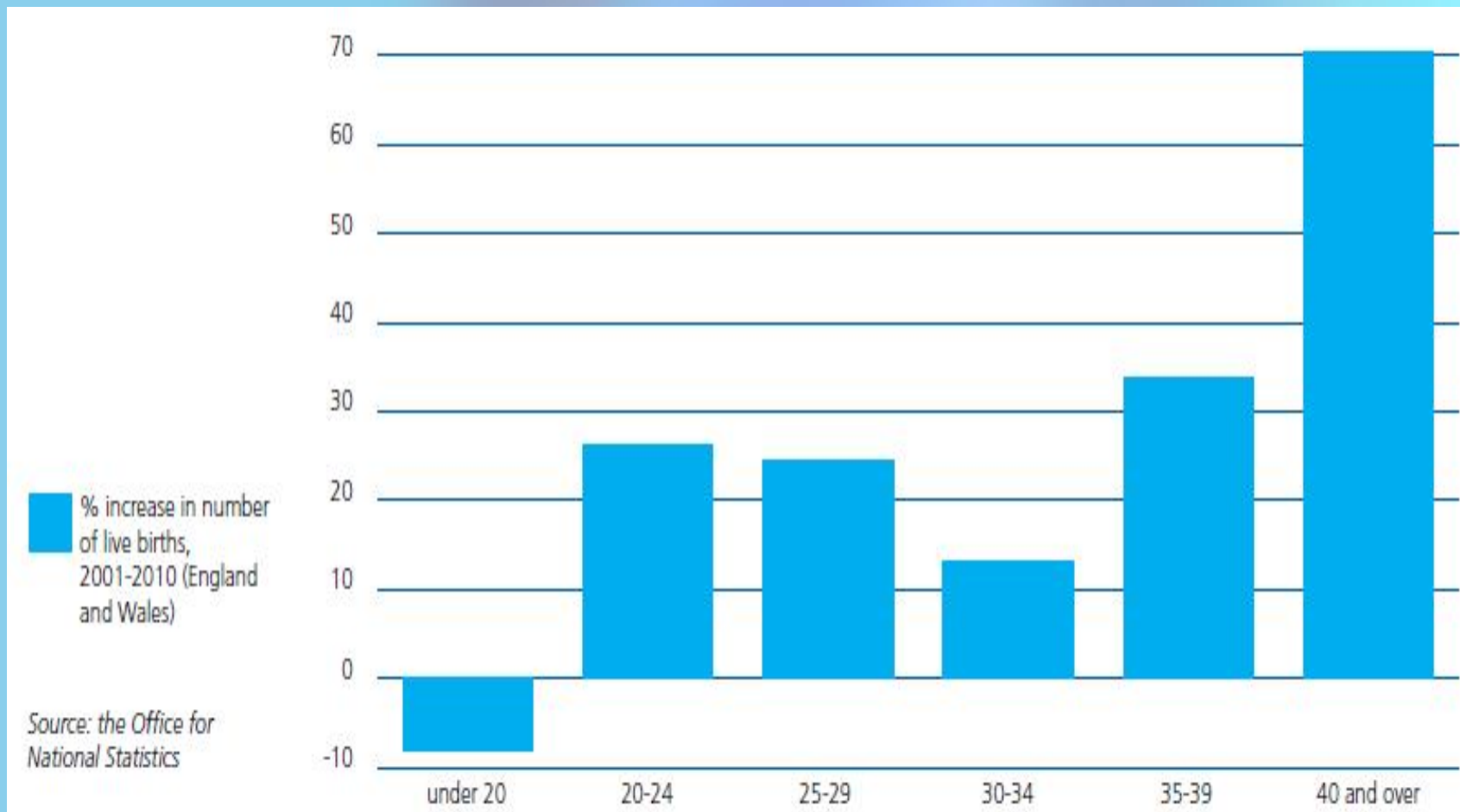


**15%**  
increase in births  
since 2001

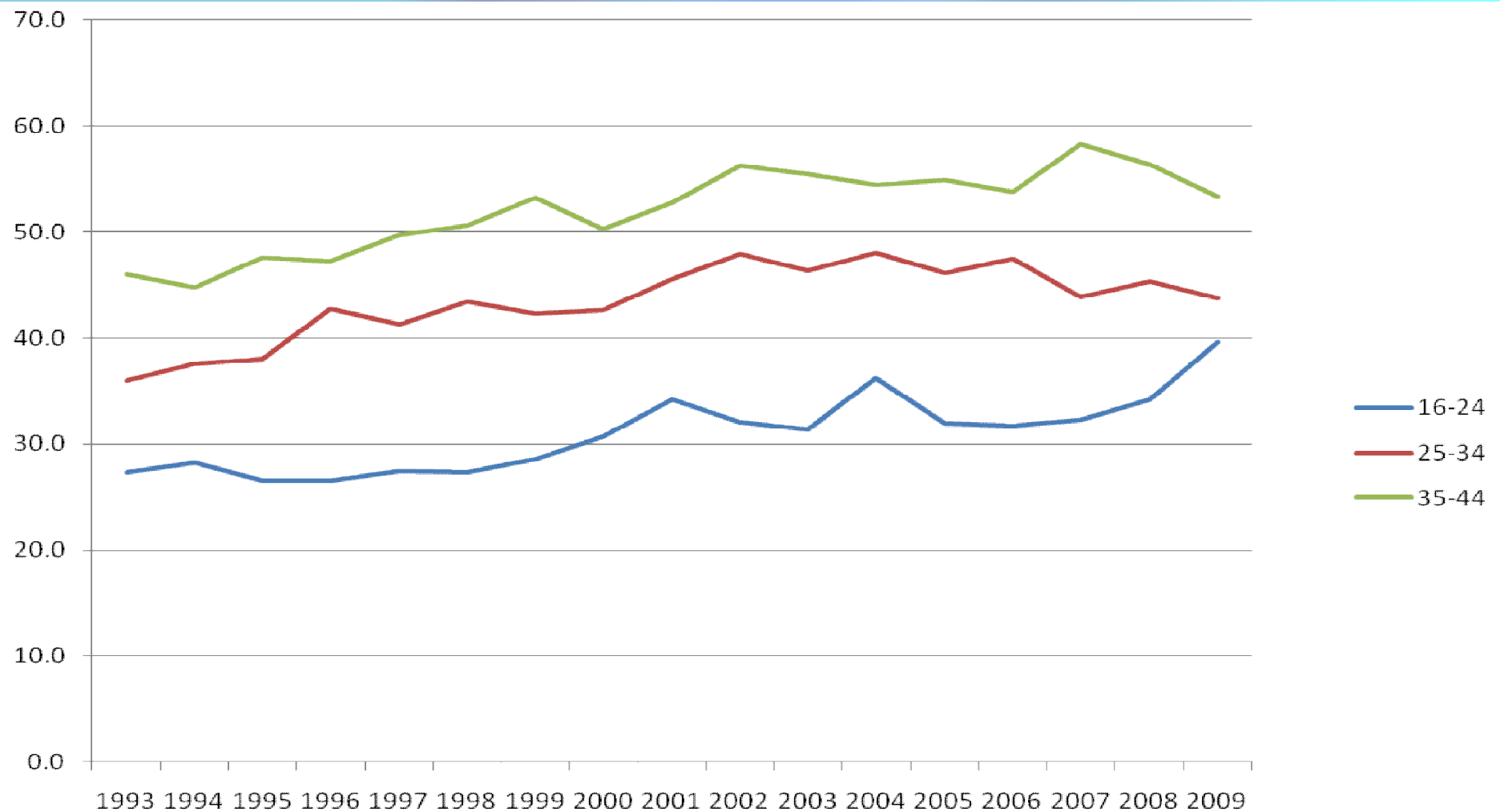
■ Number of live  
births, Northern  
Ireland

Source: Northern Ireland  
Statistics and Research  
Agency

# Age profile of mothers

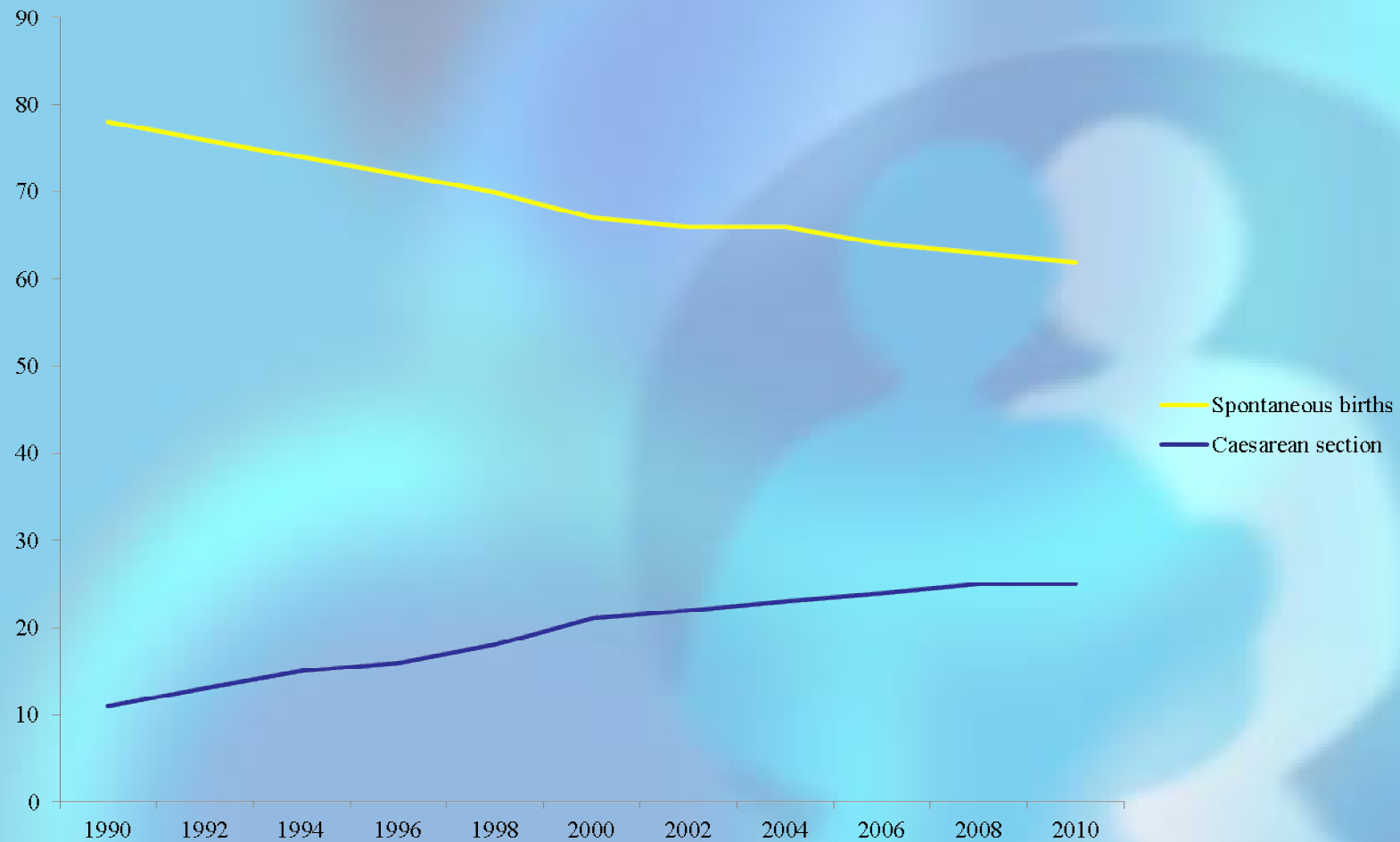


## Trends in obesity – proportion of women who are overweight or obese (BMI of 25 or more) 1993-2009



# Method of delivery 1990-2010

## England







*The Royal College of*  
**Midwives**





*The Royal College of*  
**Midwives**

# The Glan-y-More Midwifery Team





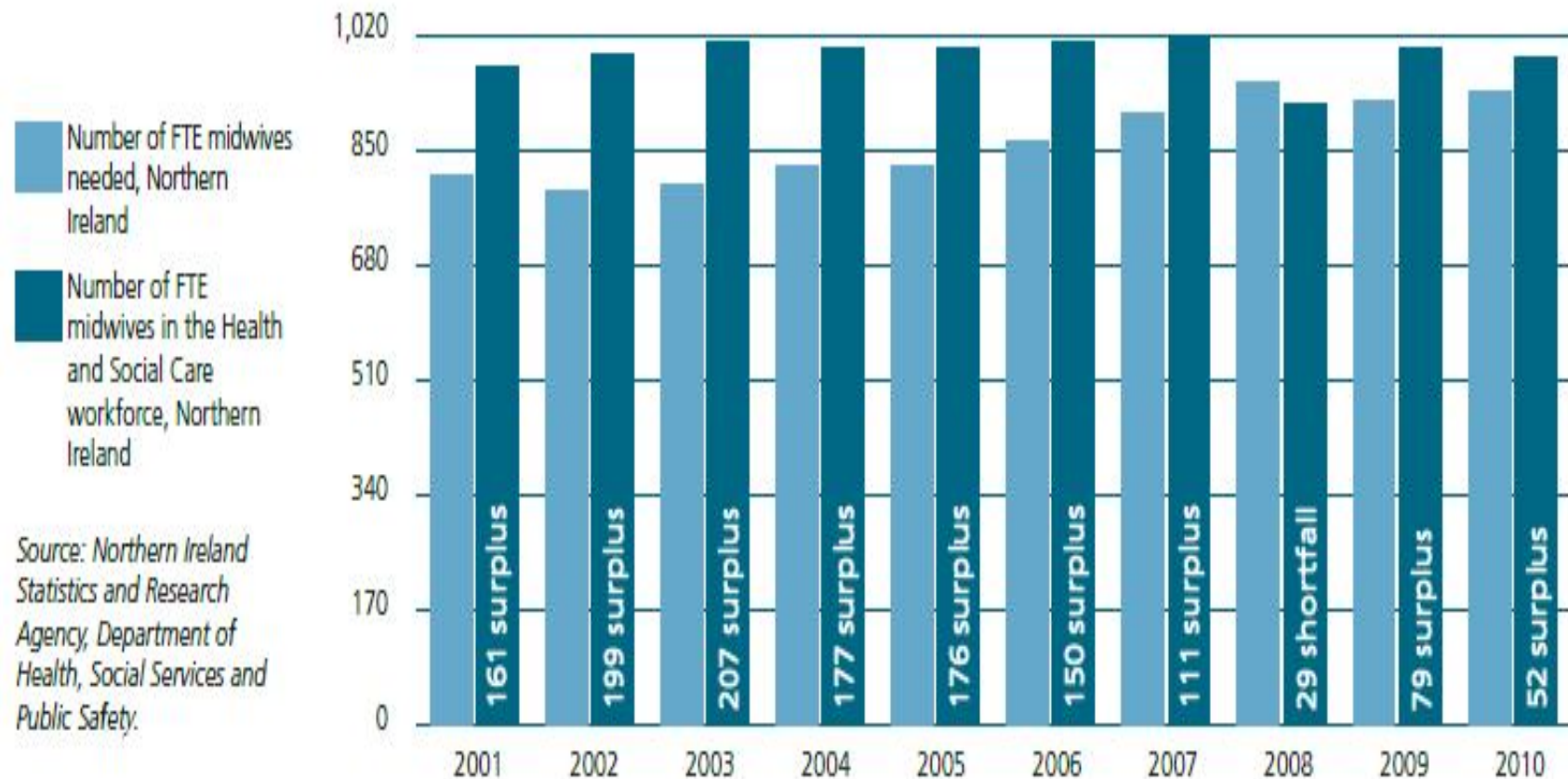
*The Royal College of*  
**Midwives**

# Northampton's Home Birth Team





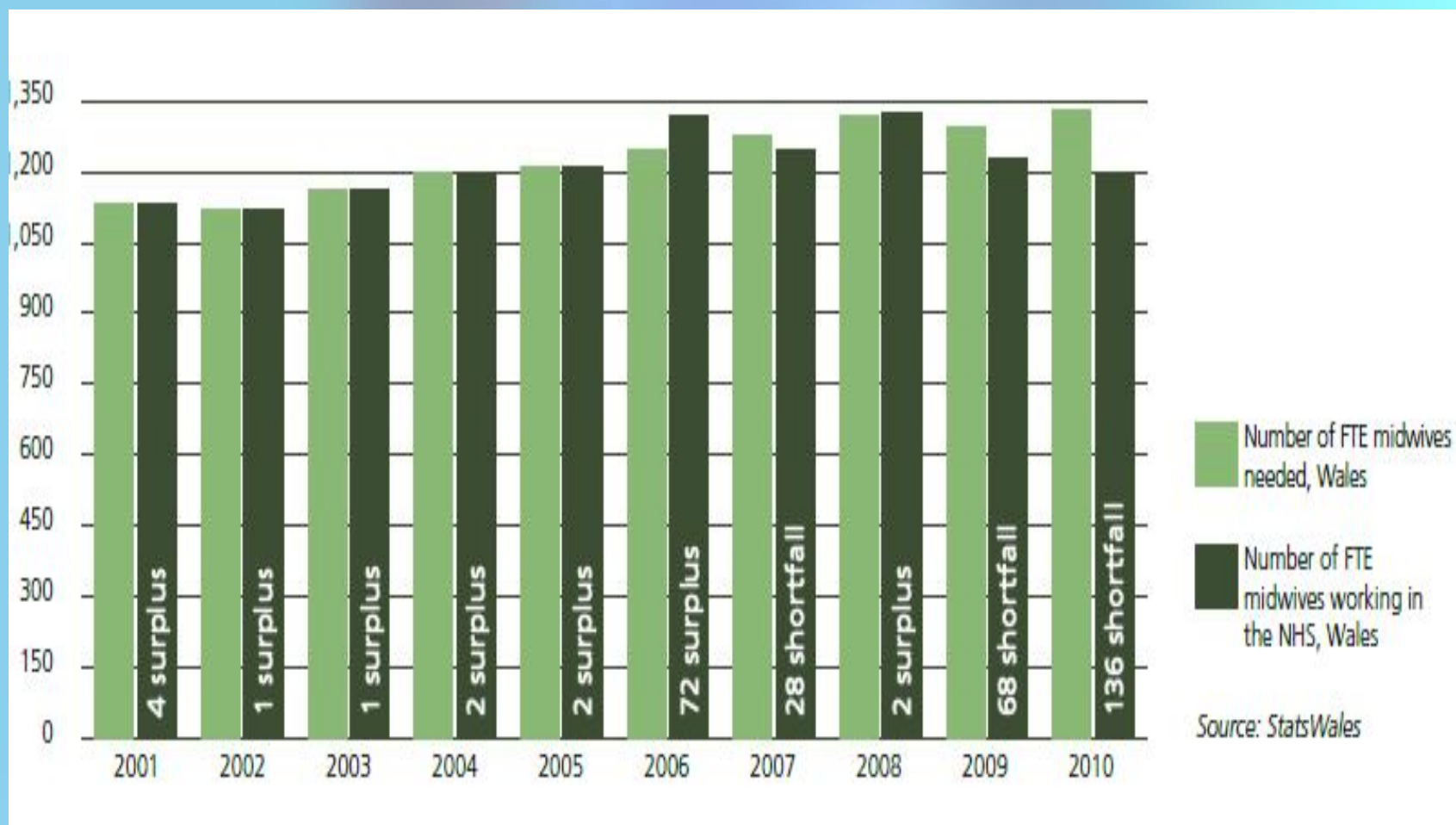
# Midwife staffing requirements Northern Ireland





The Royal College of  
Midwives

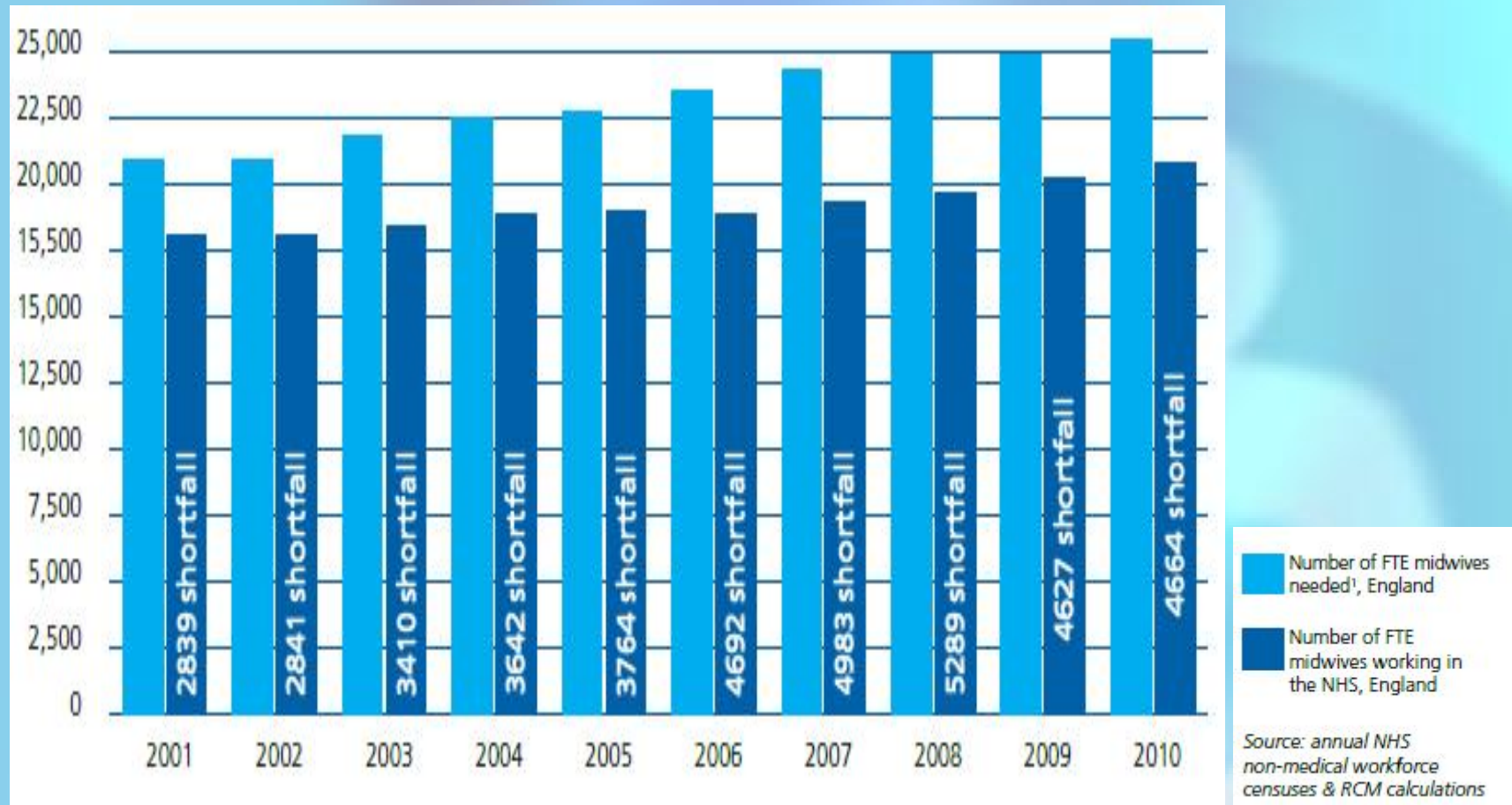
# Midwife staffing requirements Wales





The Royal College of  
Midwives

# Midwife staffing requirements England





The Royal College of  
Midwives

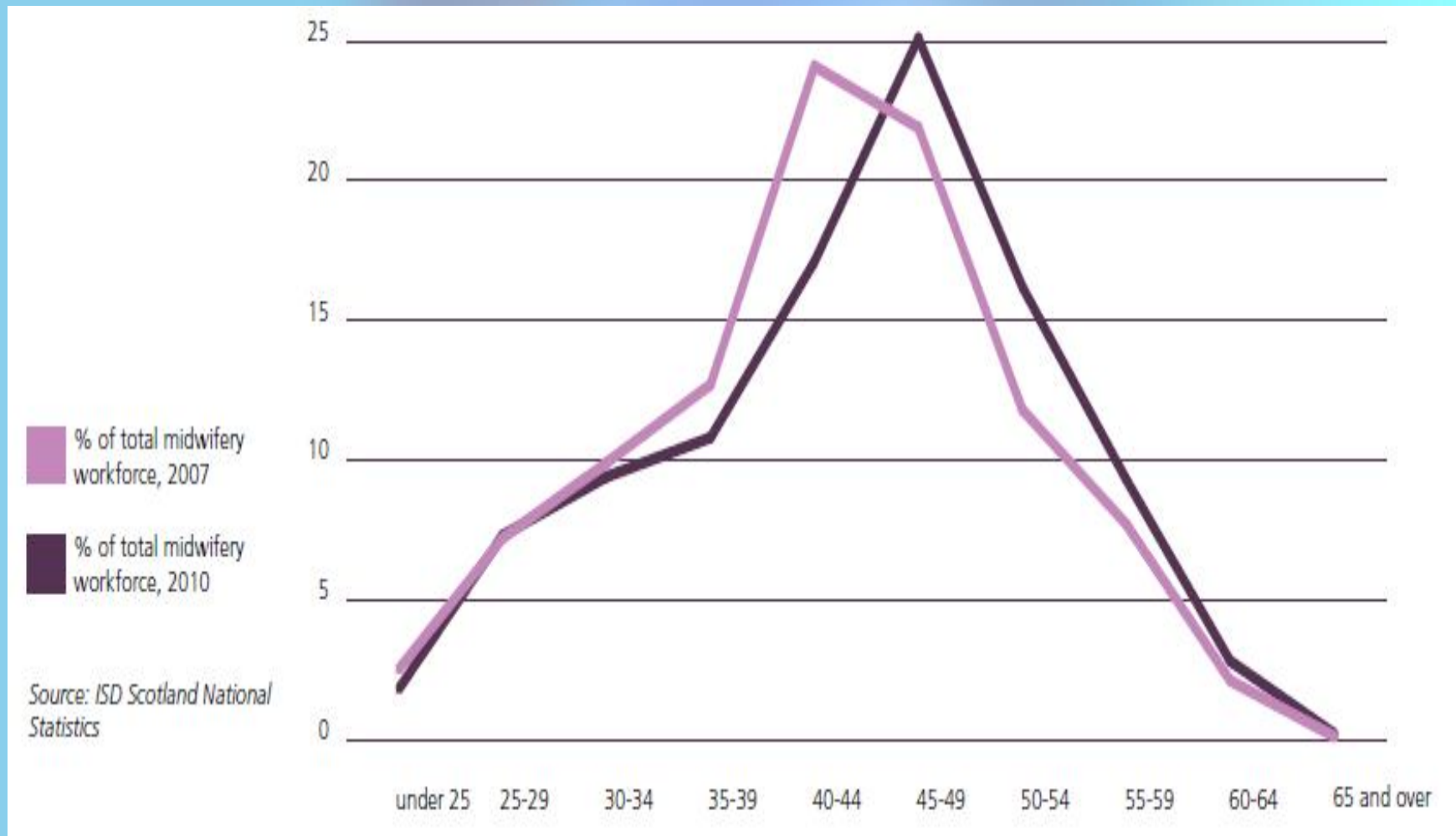
# Age profile of midwives England





The Royal College of  
Midwives


# Age profile of midwives Scotland





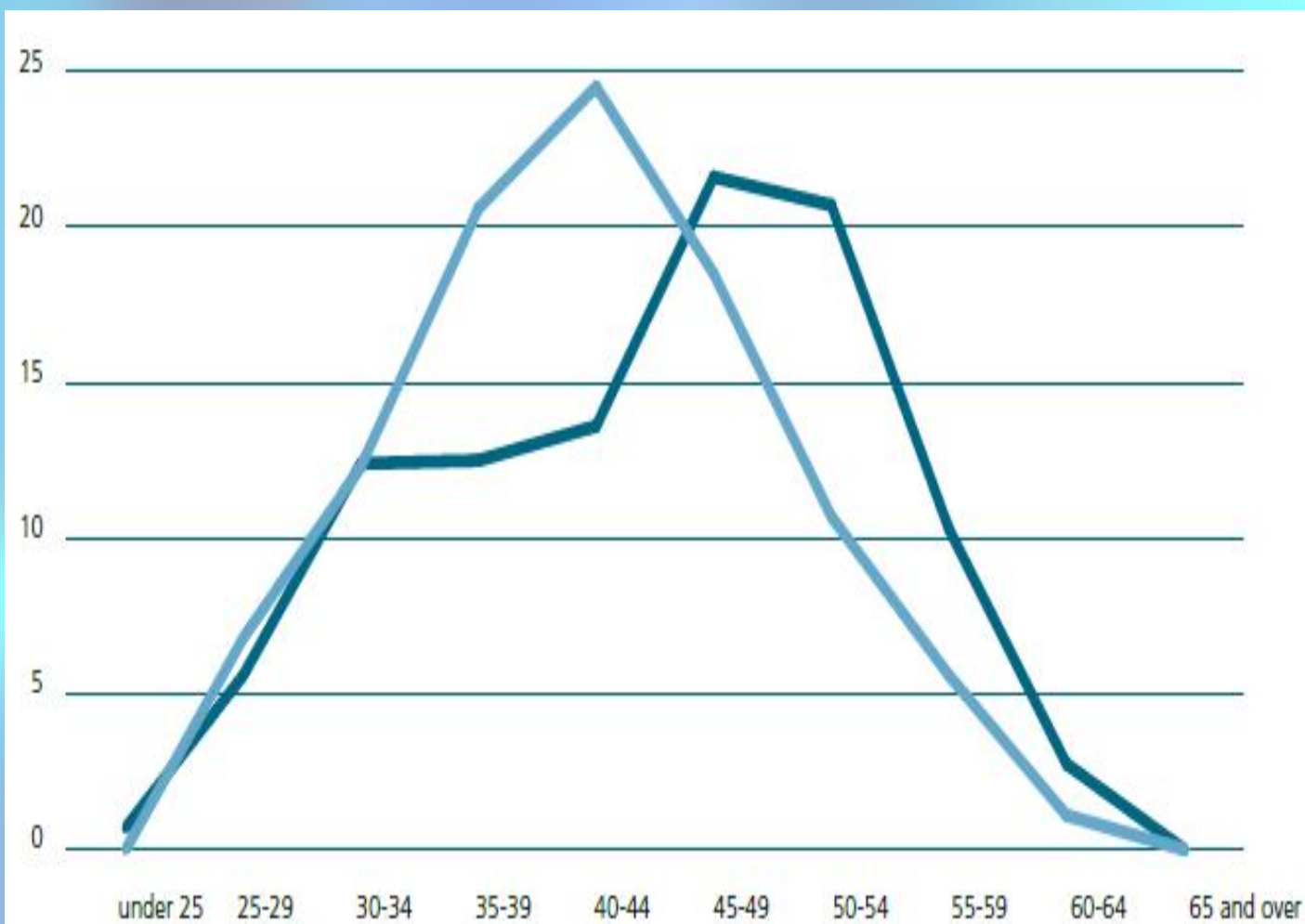
# Age profile of midwives Northern Ireland

**55%**  
of midwives were  
aged 45 or over by  
2010/2001

 % of total midwifery  
workforce, 2001

 % of total midwifery  
workforce, 2010

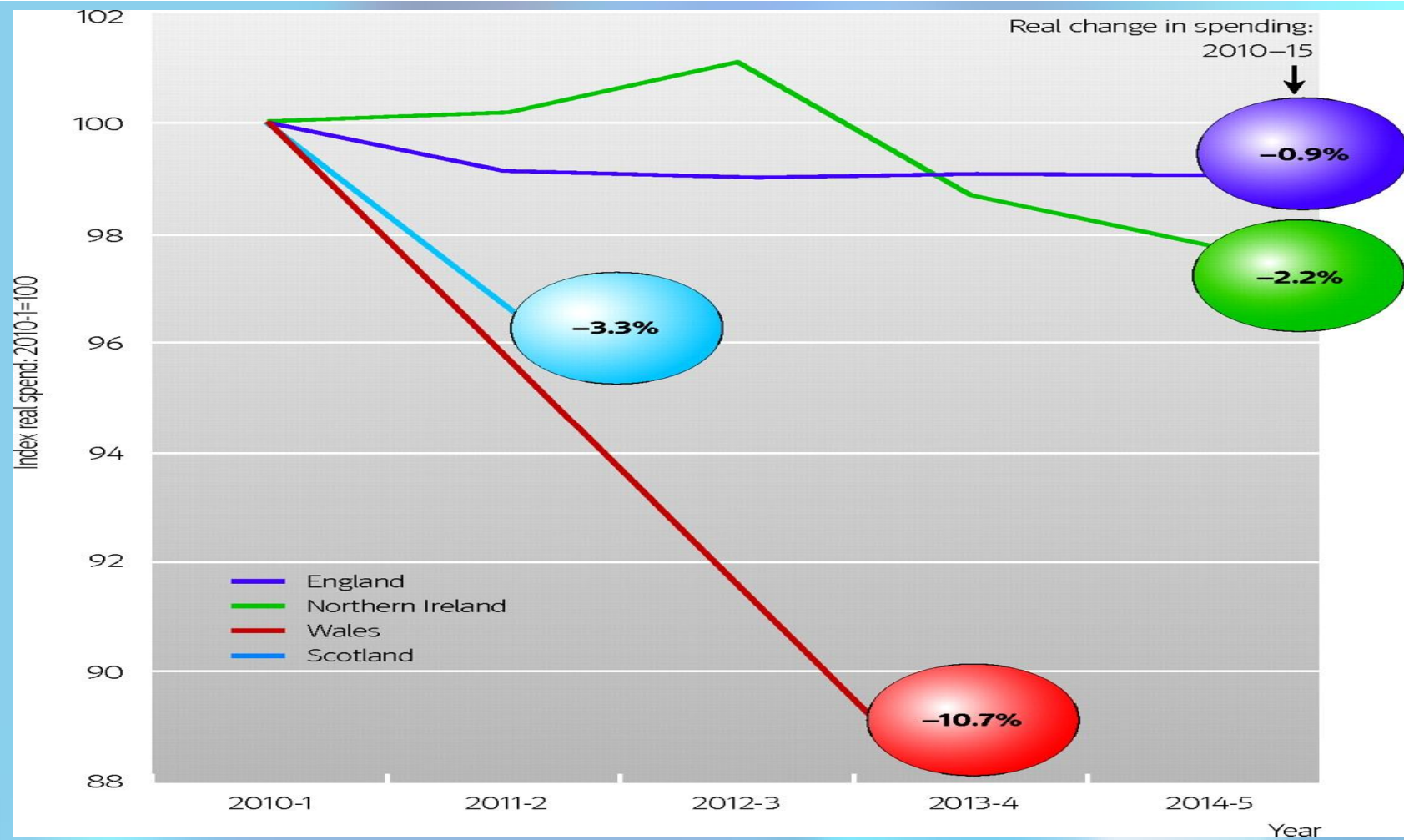
Source: Department of  
Health, Social Services and  
Public Safety.



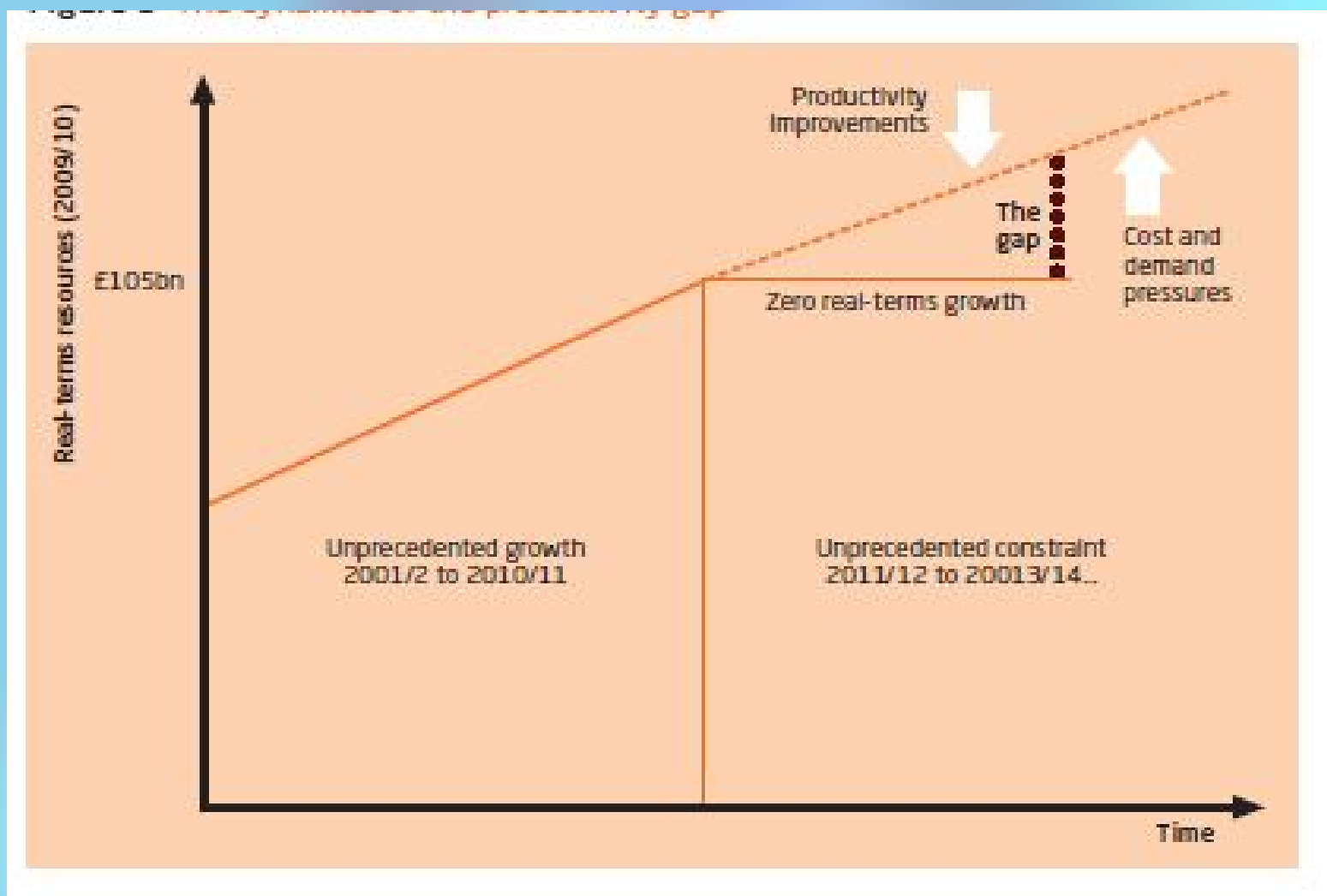


The Royal College of  
Midwives

## Change in real NHS spending, 2011-15

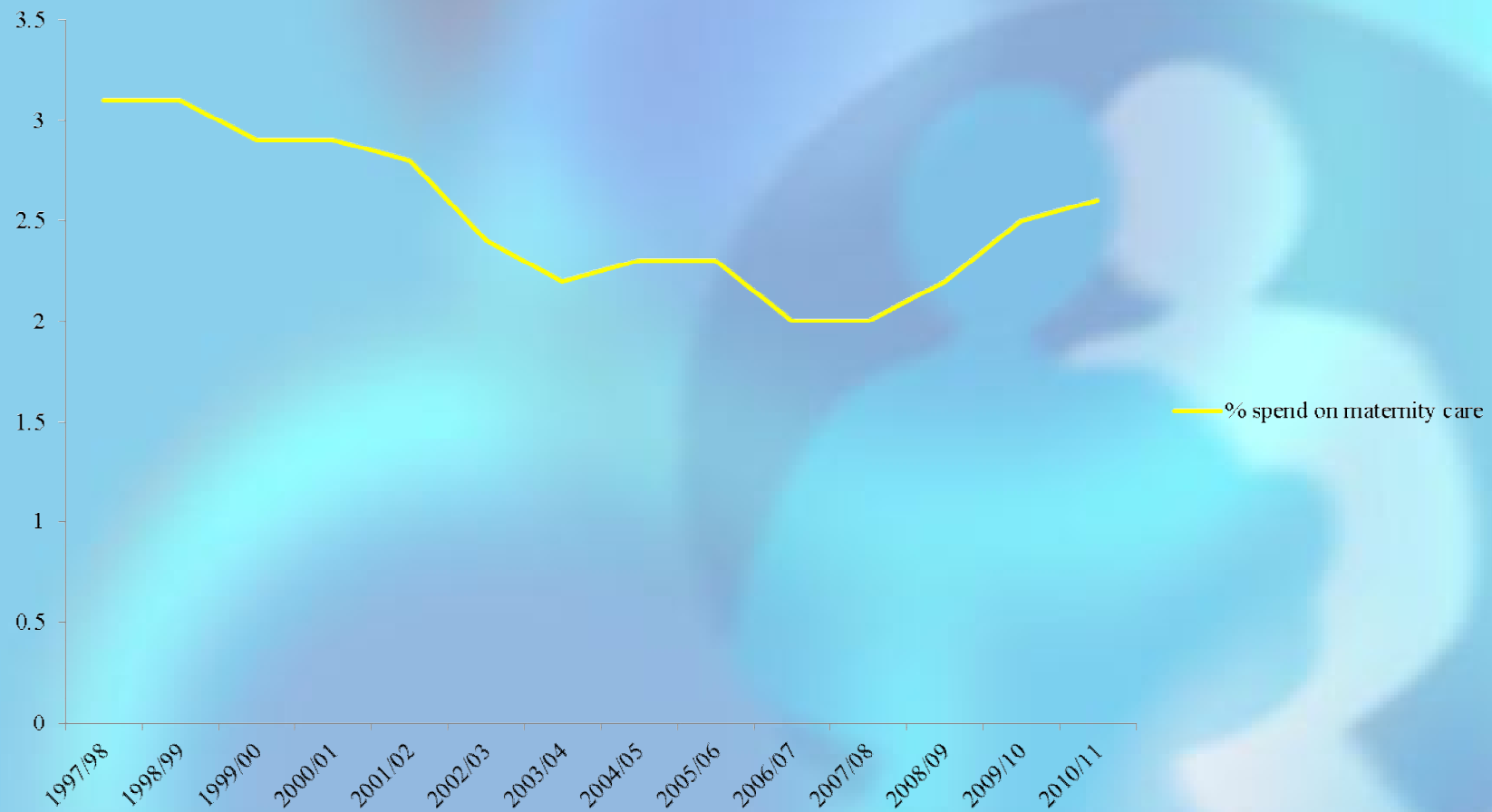


# The £20 billion funding gap England



# Maternity services spending in England

% spend on maternity care England 1997 to 2011



## RCM Annual Staffing Survey 2011

- Two-thirds of Heads of Midwifery say staffing establishments are inadequate
- One-third of HOMs say staffing levels will be cut next year
- One-third of HOMs say services will be cut next year

# Cuts to maternity services

- Midwife posts downbanded
- Senior midwives downgraded
- Birth centres threatened with closure
- Cuts to postnatal visits
- Temporary closure of midwifery units



*The Royal College of*  
**Midwives**

**DON'T STEAL  
OUR PAY AND  
PENSIONS THE  
RCM**



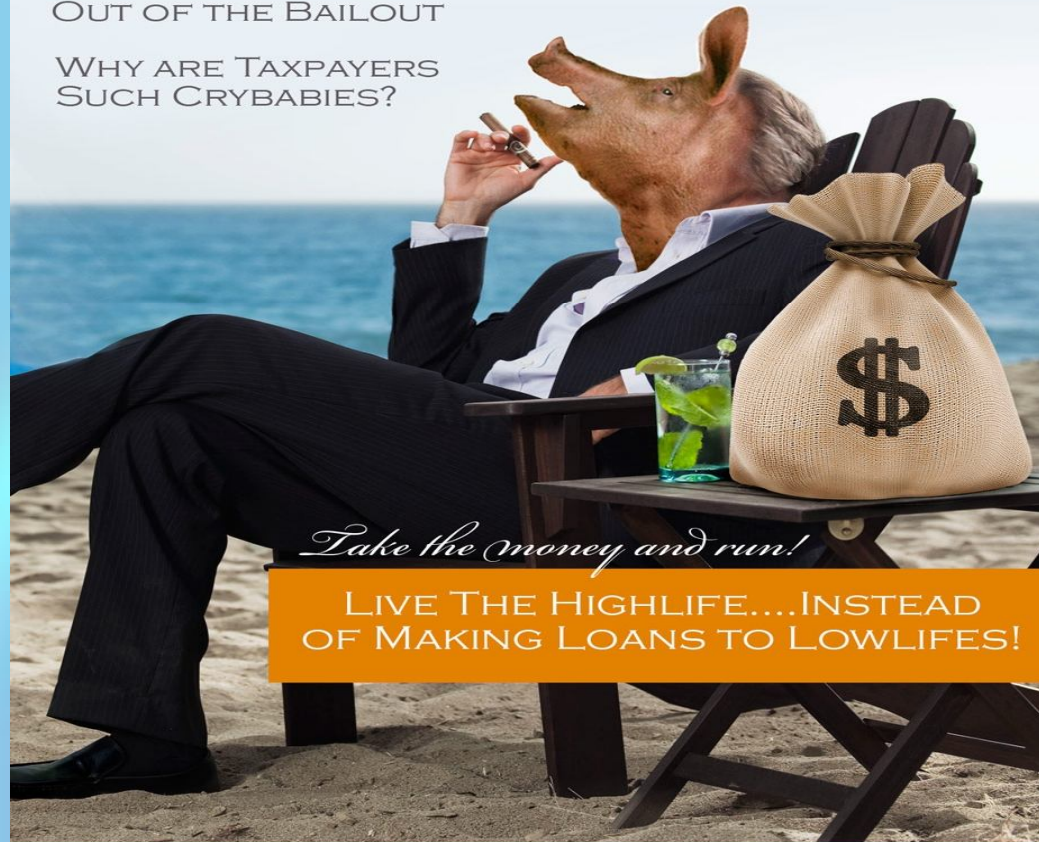


The Royal College of  
Midwives

# AMERICAN BANKER

*In this issue:*  
GETTING THE MOST  
OUT OF THE BAILOUT

WHY ARE TAXPAYERS  
SUCH CRYBABIES?



*Take the money and run!*

LIVE THE HIGHLIFE....INSTEAD  
OF MAKING LOANS TO LOWLIFES!





*The Royal College of*  
**Midwives**

**FTSE Chief Exec's average pay = £3.7 million**



# Stroud Birth Centre





# Huddersfield Birth Centre: 1,000<sup>th</sup> Birth Celebration





# Barkantine Birth Centre



**Dumfries**

**Glasgow**

**Belfast**

**Morecambe Bay**

**Manchester**

**Cardiff**

**Birmingham**

**Chelmsford**

**Maidstone**

**Crowborough**

**Portsmouth**

**Chichester**

# Three supporters of the Health and Social Care Bill







# Sign the petition!

## Recruit 5000 more midwives for England



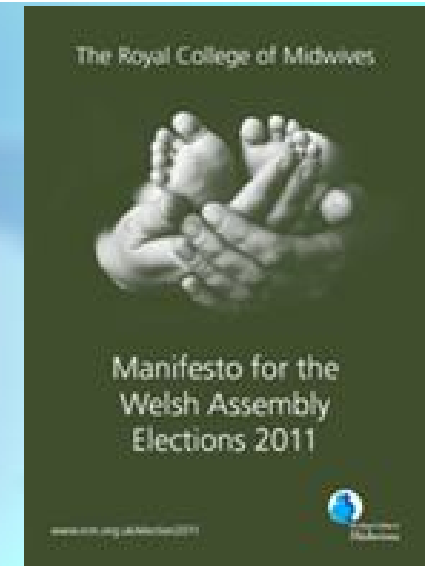
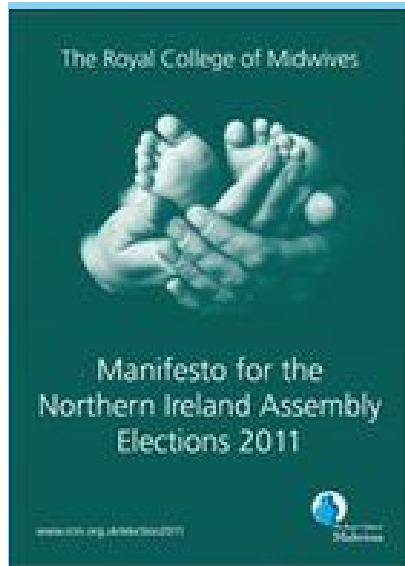
<http://epetitions.direct.gov.uk/petitions/13716>





*The Royal College of*  
**Midwives**

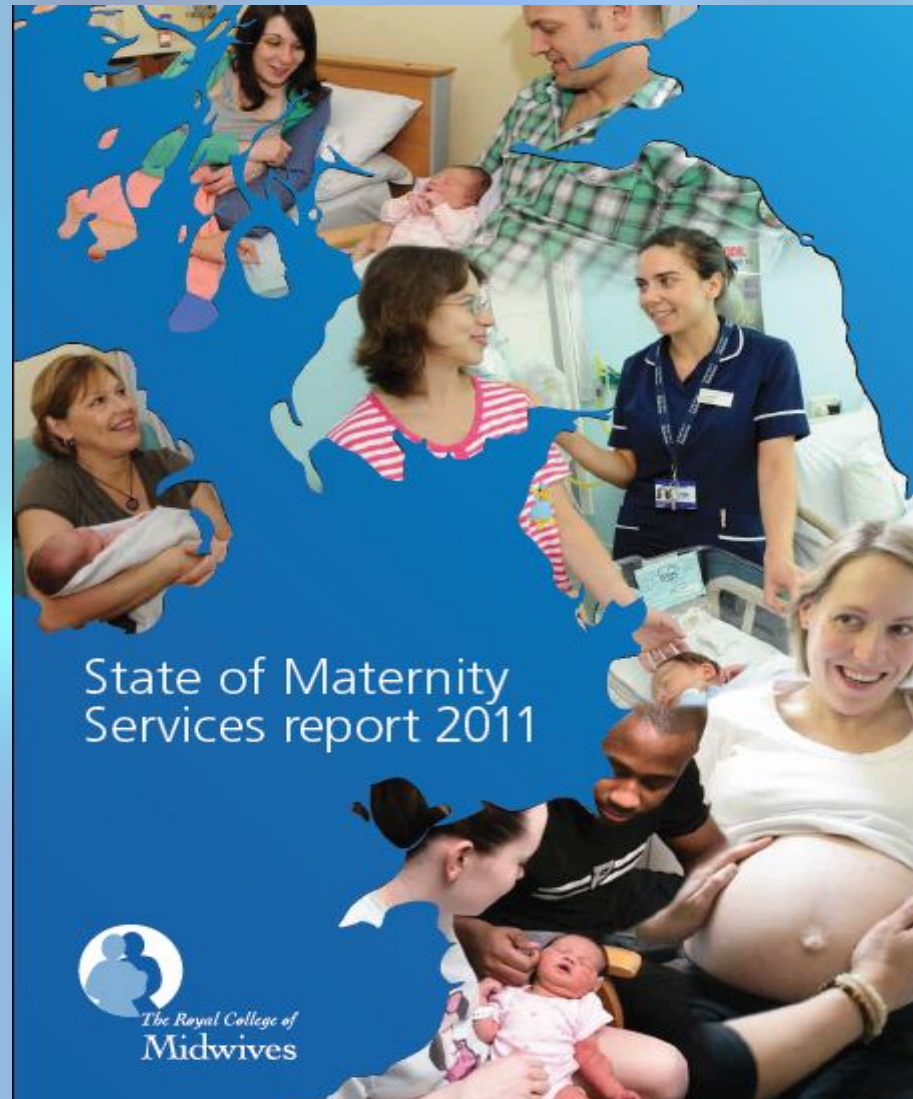
# Making the political case for midwifery





*The Royal College of*  
**Midwives**

# The State of Maternity Services Report





*The Royal College of*  
**Midwives**

**RCM**  
**i-folio**



# The new RCM library

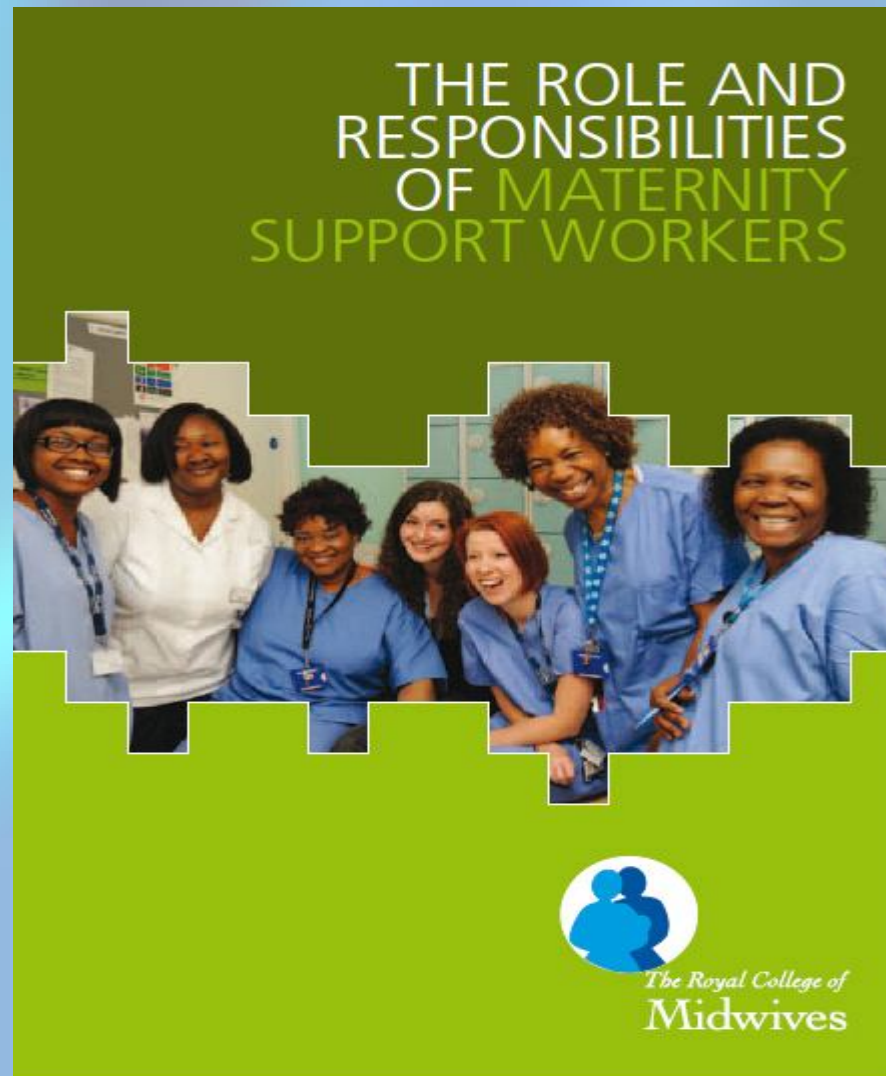




*The Royal College of*  
**Midwives**

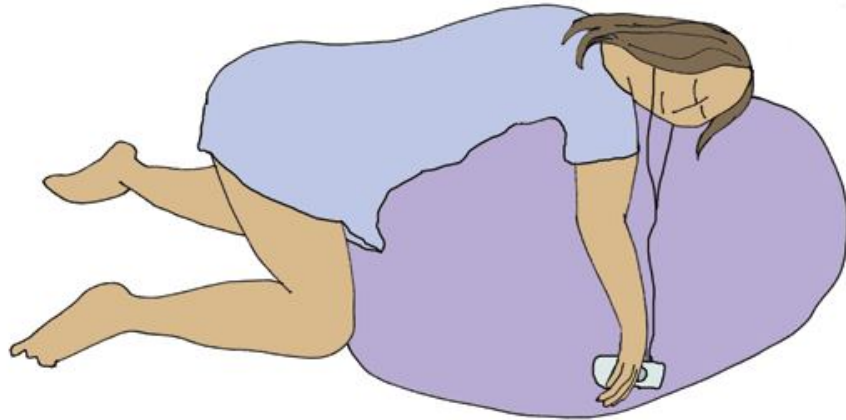
relief breastfeeding  
calm pregnancy advice  
friendly experience  
professional wellbeing amazing  
fantastic special caring time supportive  
possible able birth with health  
**midwife**  
family wonderful relationship atmosphere  
labour life mother throughout  
confidence listening  
relaxed trust understanding  
baby inspiration  
partner reassuring comfort

# Maternity Support Workers





*The Royal College of*  
**Midwives**





# The new RCM Board





# The RCM cycle team







**40,000 +  
Members**