

The Future is Open! Why Transparent healthcare is high quality, productive healthcare



CONFIDENTIAL AND PROPRIETARY

Any use of this material without specific permission of McKinsey & Company is strictly prohibited

Open Britain: Accountable, efficient and effective?

OPEN BRITAIN

theguardian

News Sport Comment Culture Business Money Life & style

News Society Health

UK heart operation death rates fall after data published

Analysis dispels myth that surgeons are more likely to refuse to operate on risky cases if data is made public

'Access to my mother's medical records has changed my life'

Daughter caring for her mother from home in Australia

dr foster®
intelligence



GlaxoSmithKline

BIOTECH
GATE
COMPANY DATABASE



OPEN DATA

**IMPROVE
OUTCOMES?**

**TRANSFORM
SERVICES?**

**ECONOMIC
GROWTH?**

FAILING BRITAIN

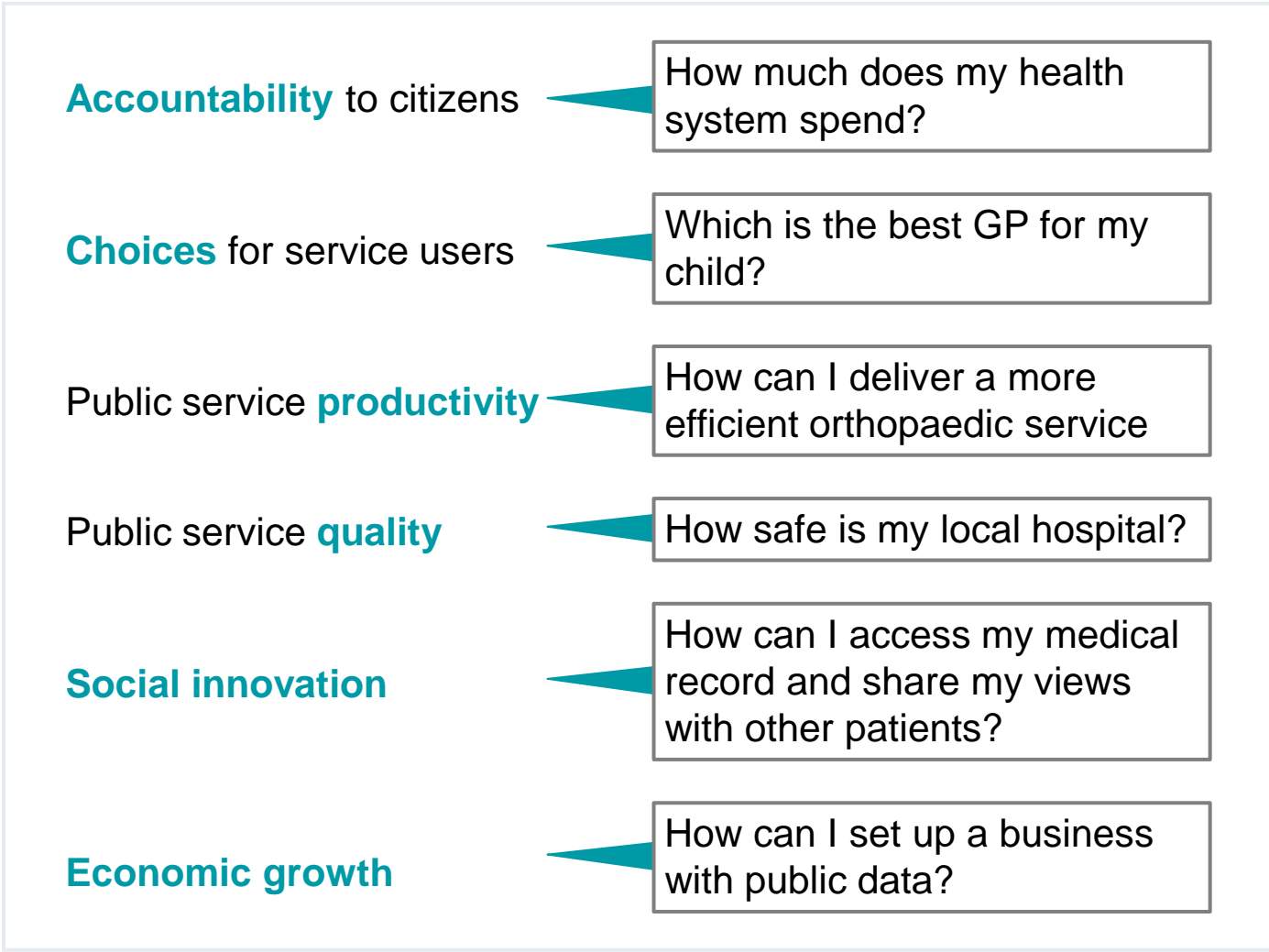


'I have no idea what I am commissioning for the elderly'

Local authority CEO, after a new allegation of abuse in a care home



The Power of Open Data



Data transparency has transformed other sectors... so why not healthcare?

Online banking – a consumer success story

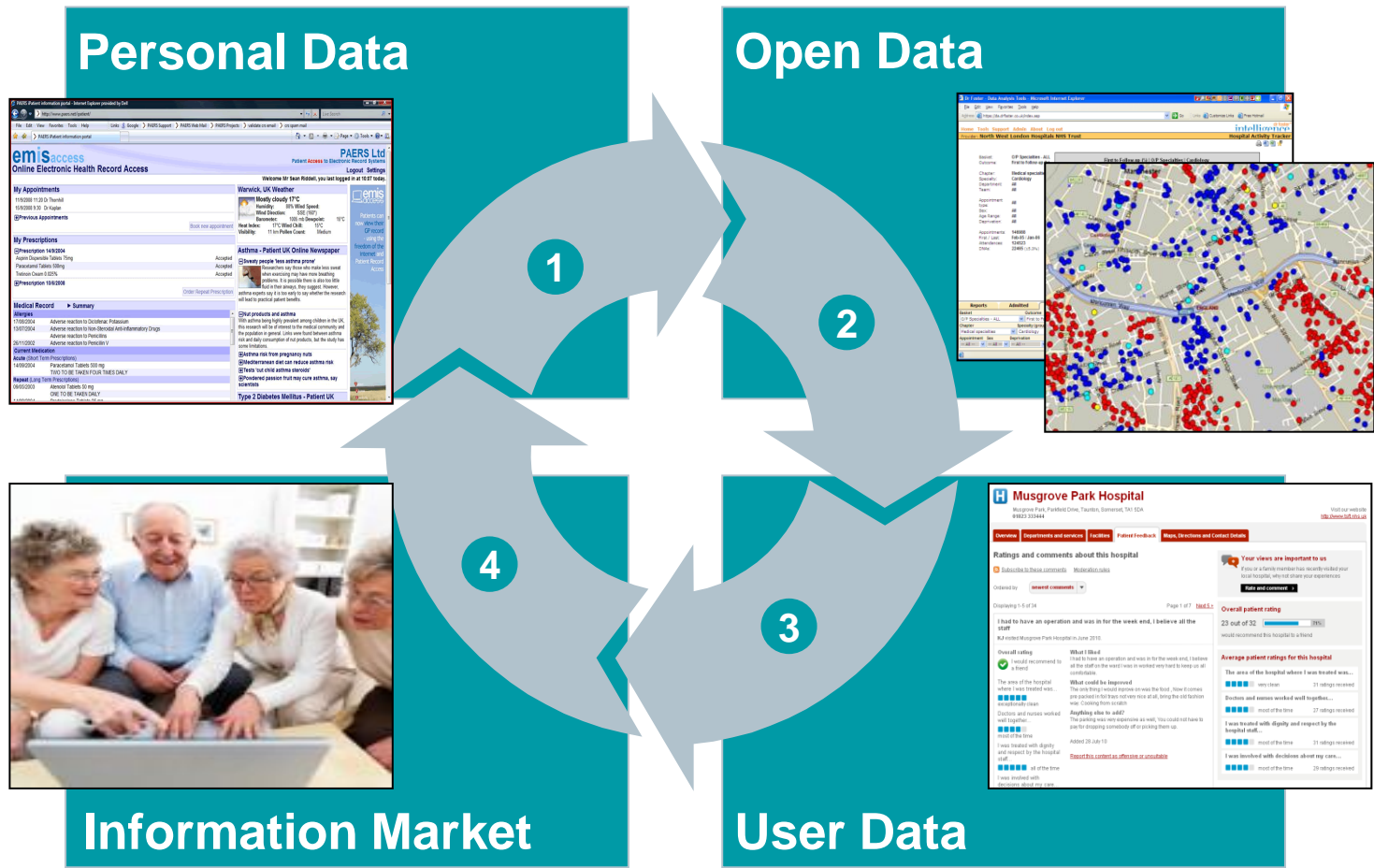
- Launched in the US in 1994 and in the UK in 1998
- Now >22M adult users (>50% of computer users)

The logo for cahoot, featuring the word "cahoot" in a lowercase, rounded, purple font.The logo for RBS, featuring a blue stylized sunburst icon followed by the letters "RBS" in a bold, blue, sans-serif font.

Consumer applications offered with digital banking

- ACCESS TO RECORDS
 - Online banking offers access to personal bank account applications in a secure environment
 - Healthcare equivalent: access to the medical record
- ABILITY TO TRANSACT
 - Customers pay bills and receive payments
 - Healthcare equivalent: ability to receive test results
- ABILITY TO BOOK APPOINTMENTS
 - Online banks offer real time facilities to book meetings and calls with advisers

We need a Transparency revolution in healthcare!

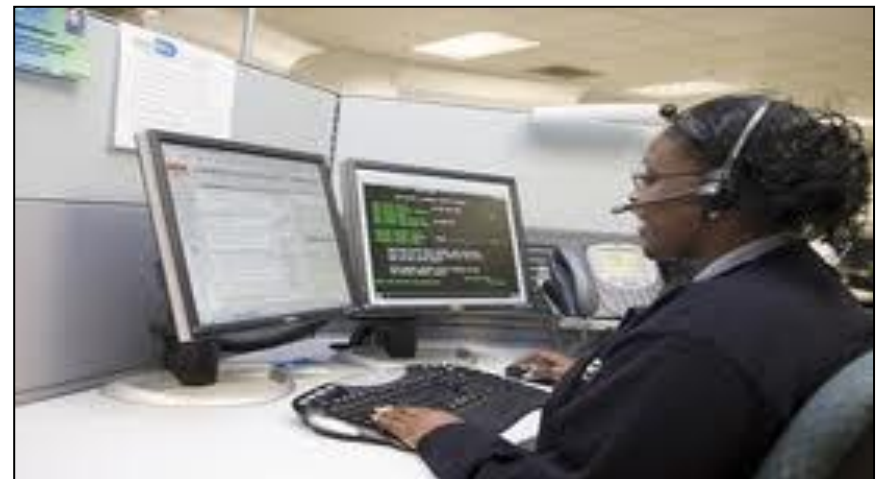


Miami 311 – dynamic information marketplace of the future



Miami Dade provides real time online data on 4,500 non-emergency services, like refuse collection, to drive customer satisfaction, productivity and service quality.

It took 2 people 8 days to produce the app with no up-front costs



The Future is Open: NHS London and GLA launch unprecedented new primary care initiative

my health-london

Log in | Register | About this website | Contact us

Search

Home

My local GP

Quality standards

News


Events

Health resources

Lorem ipsum dolor amet consectetur

Sed ut perspiciatis unde omnis iste natus error voluptatem accusantium doloremque laudantium, totam rem aperiam, eaque ipsa quae ab illo inventore veritatis et quasi architecto beatae vitae dicta sunt, explicabo.


Find out more





What is this site about

Lorem ipsum dolor amet consectetur adipisicing elit, sed do eiusmod tempor incididunt ut labore dolore magna aliqua. Enim ad minim veniam nostrud exercitation ullamco laboris nisi aliquip ea commodo consequat. Duis aute voluptate esse cillum dolore eu fugiat nulla pariatur.

Find out more

Lorem ipsum dolor amet consectetur

Duis aute voluptate esse cillum dolore

Enim minim veniam quis nostrud

Find your local GP practice

Postcode, location or practice name

with the following service

GO

Quality standards

The NHS in London has developed general practice standards to give you the information you need to make decisions about your care.

Compare one or more practices

See how your GP practice compares on the London standards.

View a London wide report

In focus

See all

Battersea Rise Practice

PRACTICE VOICE

New initiative launched to support people with diabetes in the Battersea area.

Find out more

5 comments

Palace Road Surgery

82% of patients are satisfied with the overall quality of care they receive at the practice.

Find out more

London update

All

News

Events

NEWS | 03/06/11

Earling morning opening times added from 8th June.

EVENT

Asthma group weekly meeting. Find out more about this event.

NEWS | 12/05/11

Extended appointments before 8.00am and after 6.30pm.

Fe

Information about local patient groups and disease-specific events

Easy search tool to find local doctor (with filter for selecting extra services required)

Quality and service performance data which is relevant for patients

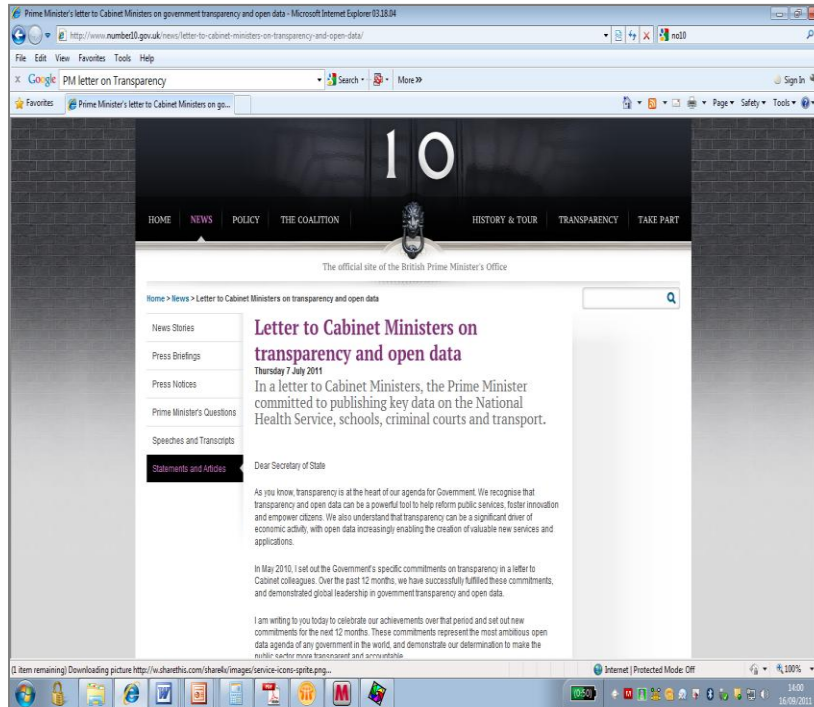
Information about local patient groups and disease-specific events

SOURCE: McKinsey

McKinsey & Company | 6

Working Draft - Last Modified 14/11/2011 13:08:07 Printed

Open Britain: driving social and economic benefit across the NHS



World first: Integrated patient data

World first: Online patient record access

World first: Clinical audit transparency

