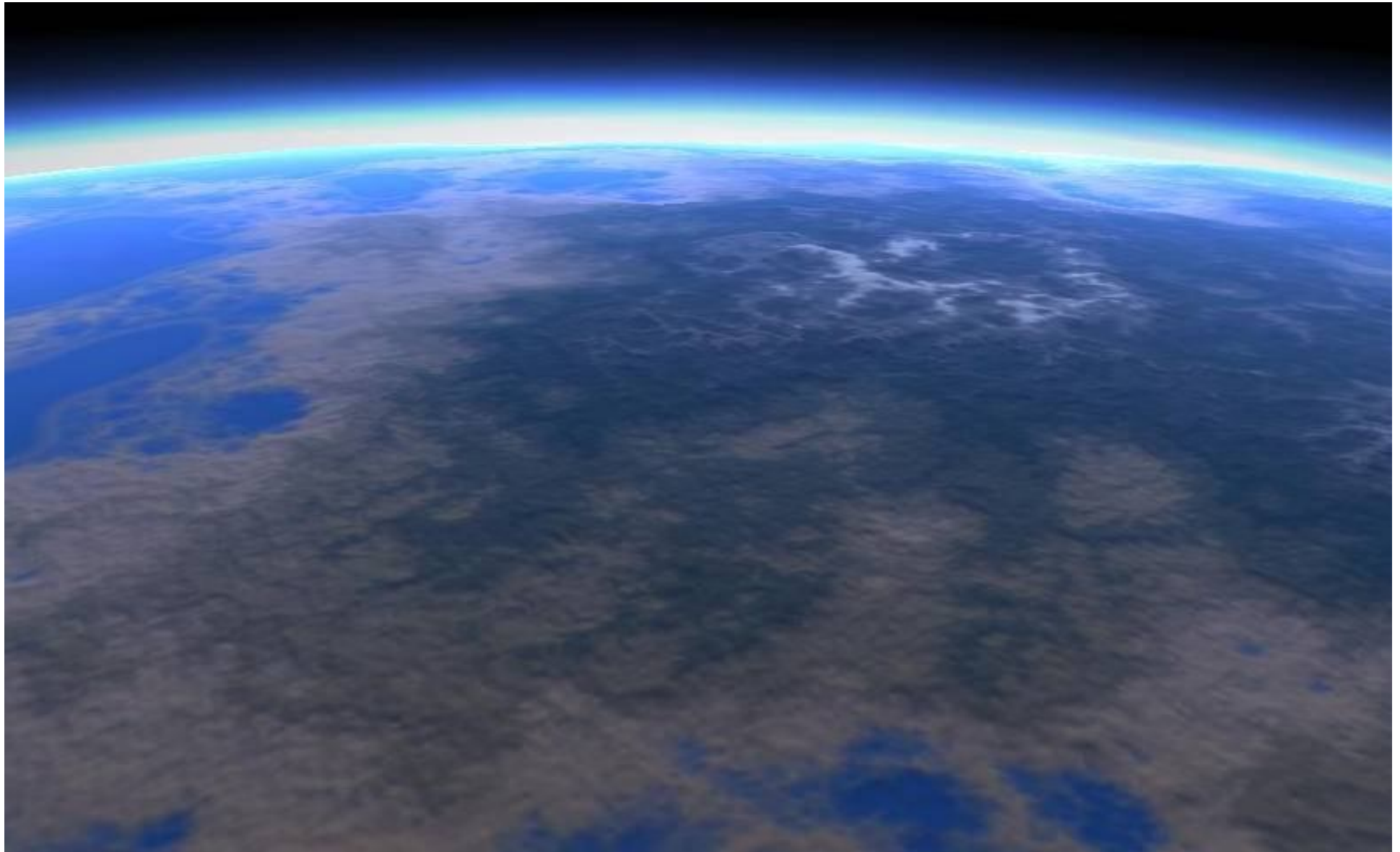




Maternity Services in a Changing World

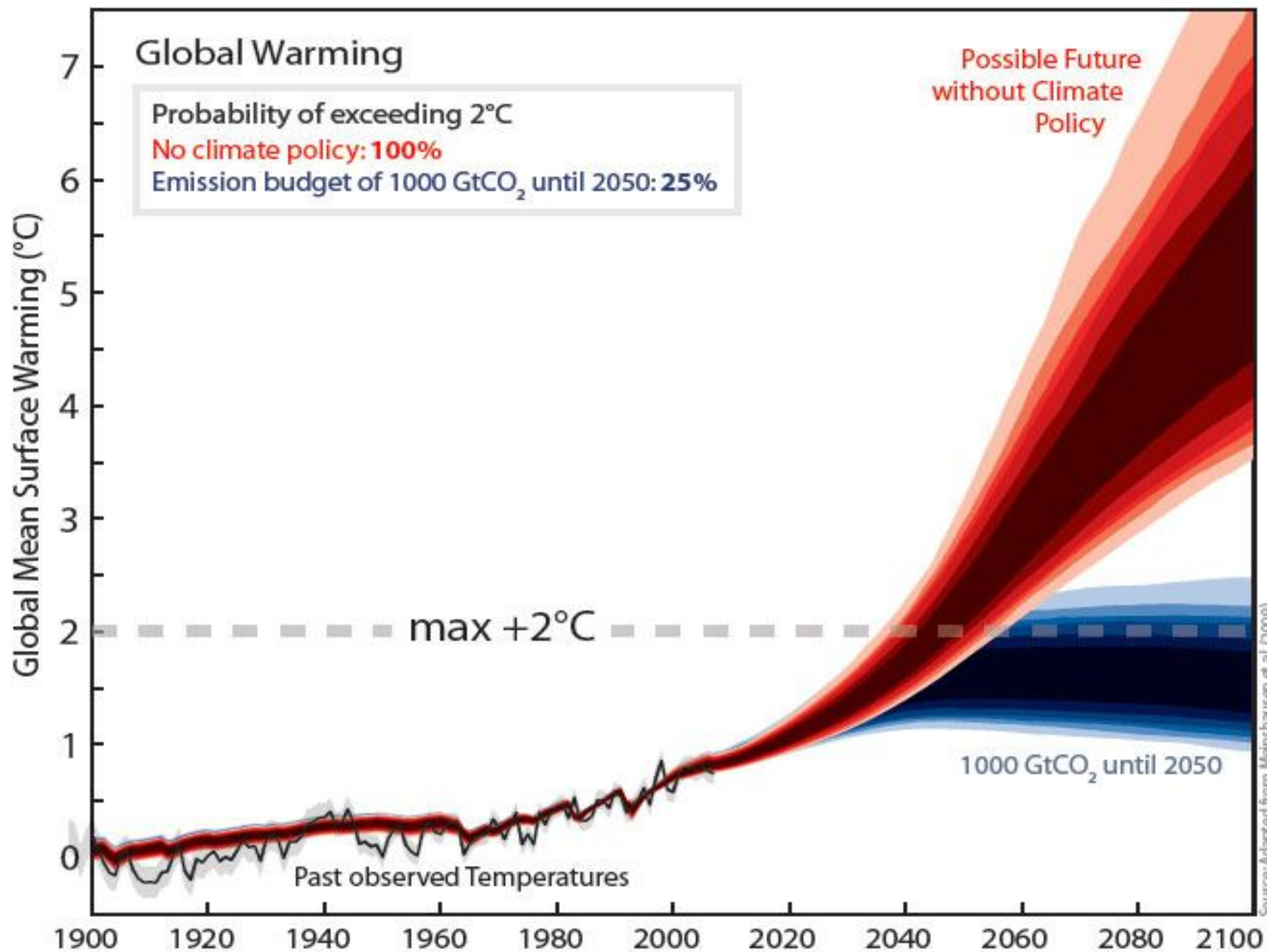
Head in the sand or
Line in the sand?

Karl Heidel
NHS SDU
Communications



www.sdu.nhs.uk

NHS
*Sustainable
Development Unit*



Source: Adapted from Meinshausen et al. (2009)



BMJ



Climate change

Time to act on climate change: the NHS

How much could genetic testing save the NHS?
Are older antipsychotics obsolete?
The benefits of "off-pump" CABG
New football boots and toxic shock
Never get between a she-bear and her cubs

bmj.com

THE LANCET

Volume 373 · Number 9676 · Pages 1659-1734 · May 16-22, 2009

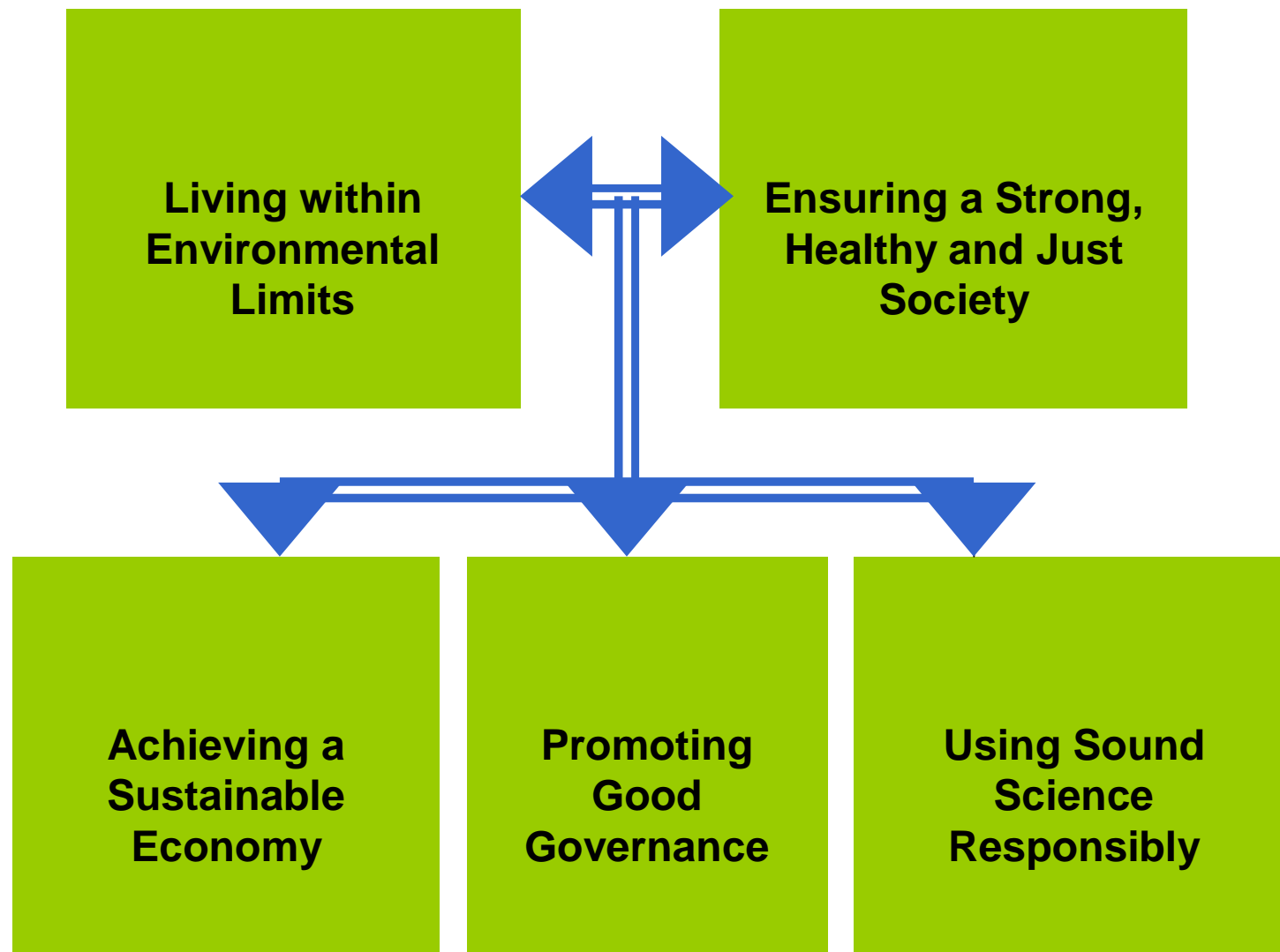
www.thelancet.com

"Climate change is
the biggest global
health threat of the
21st century."

See The Lancet Commissions page 1693

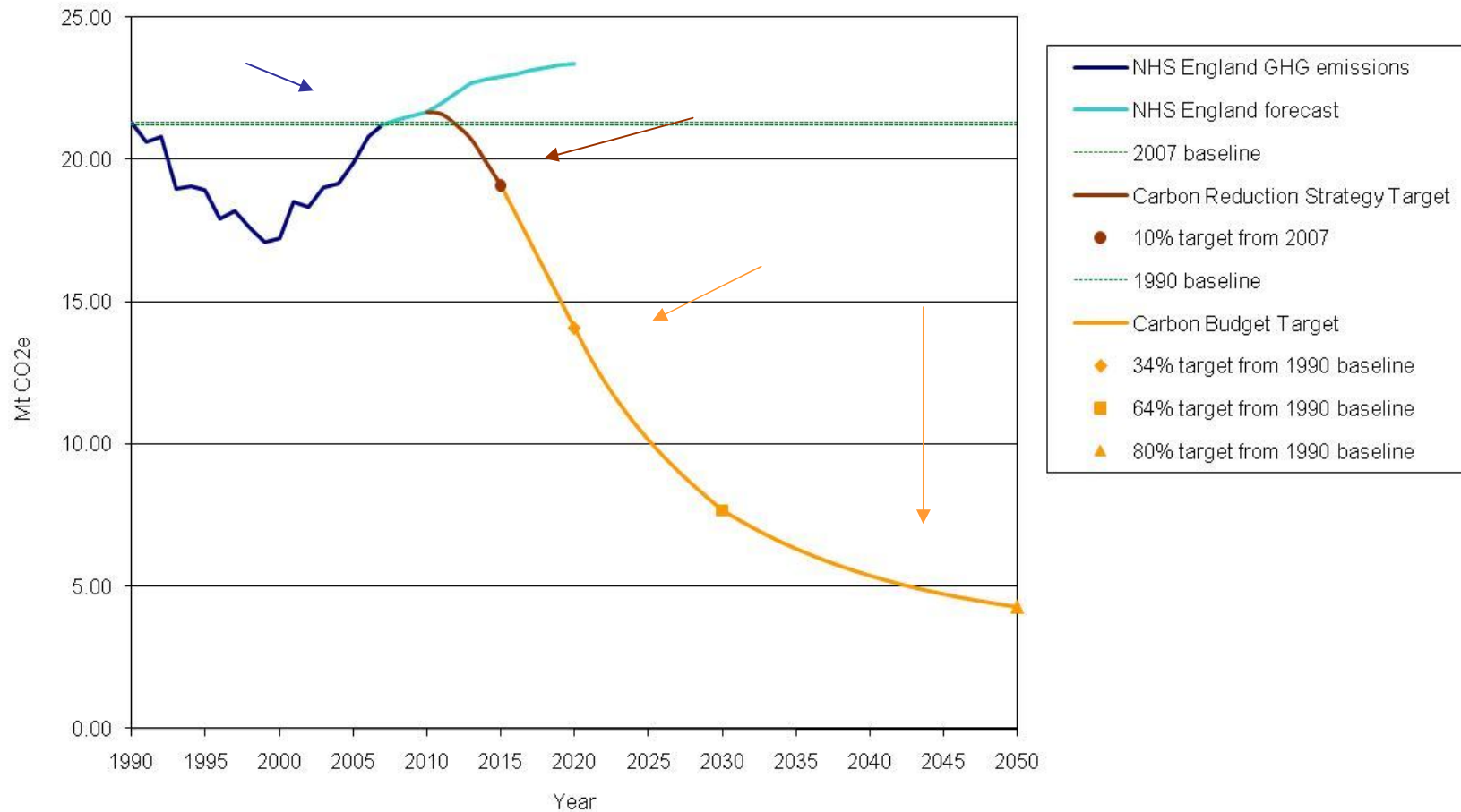
NHS

Sustainable
Development Unit



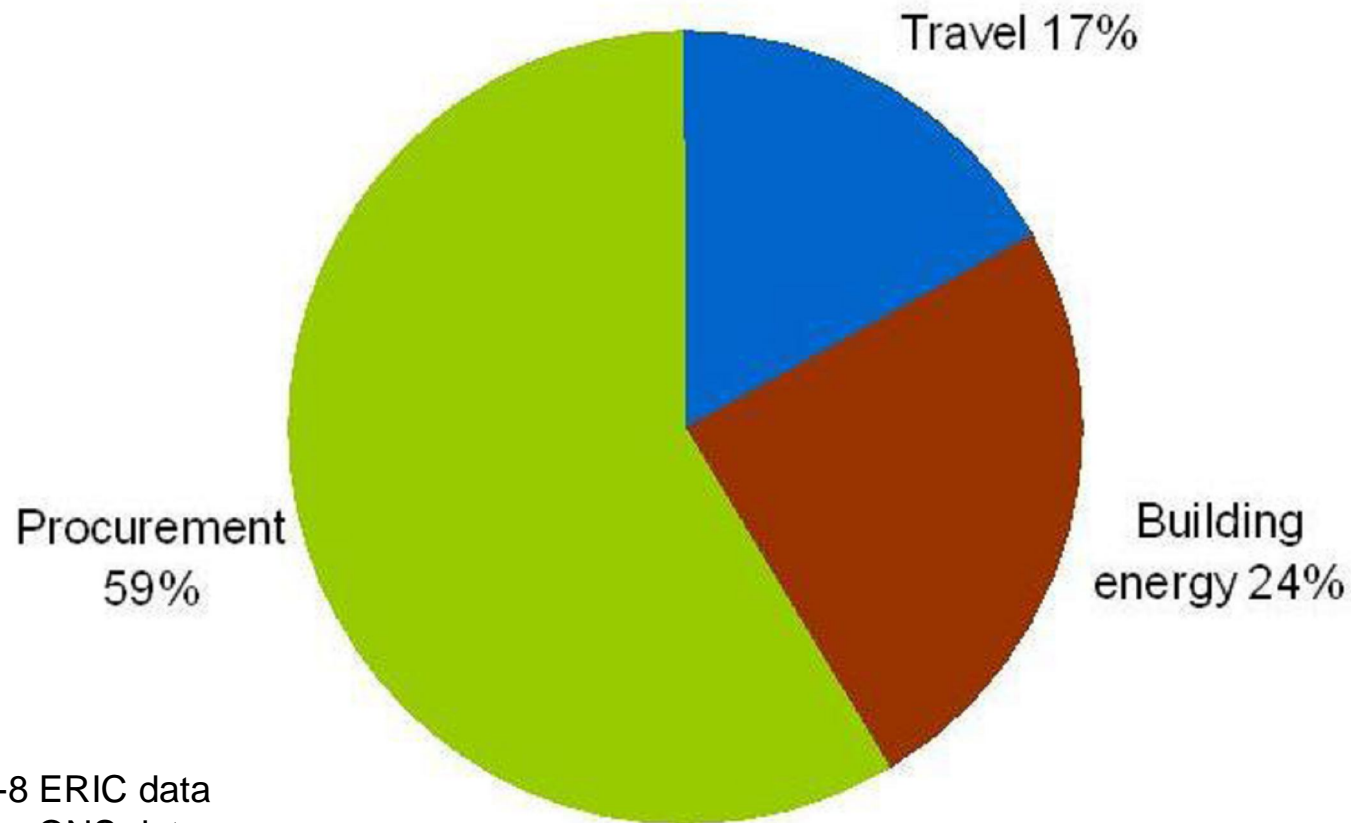


NHS England CO₂e footprint 1990 – 2020 with Climate Change Act targets





Carbon footprint – NHS England –



2007-8 ERIC data
2007 ONS data

www.sdu.nhs.uk



“...it’s a very important strategy for the NHS: it is really good for the environment, it's good for our society, it's good for our staff and for us most importantly it's good for our patients”



David Nicholson, CEO NHS England



www.sdu.nhs.uk



Sustainable Development Unit



Saving Carbon, Improving Health



NHS CARBON REDUCTION STRATEGY FOR ENGLAND

January 2009



**Sustainable
Development Unit**



Three levels of health co-benefits

Individual

Physical activity, mental health, trauma, air pollution, food and agriculture...

Organisational

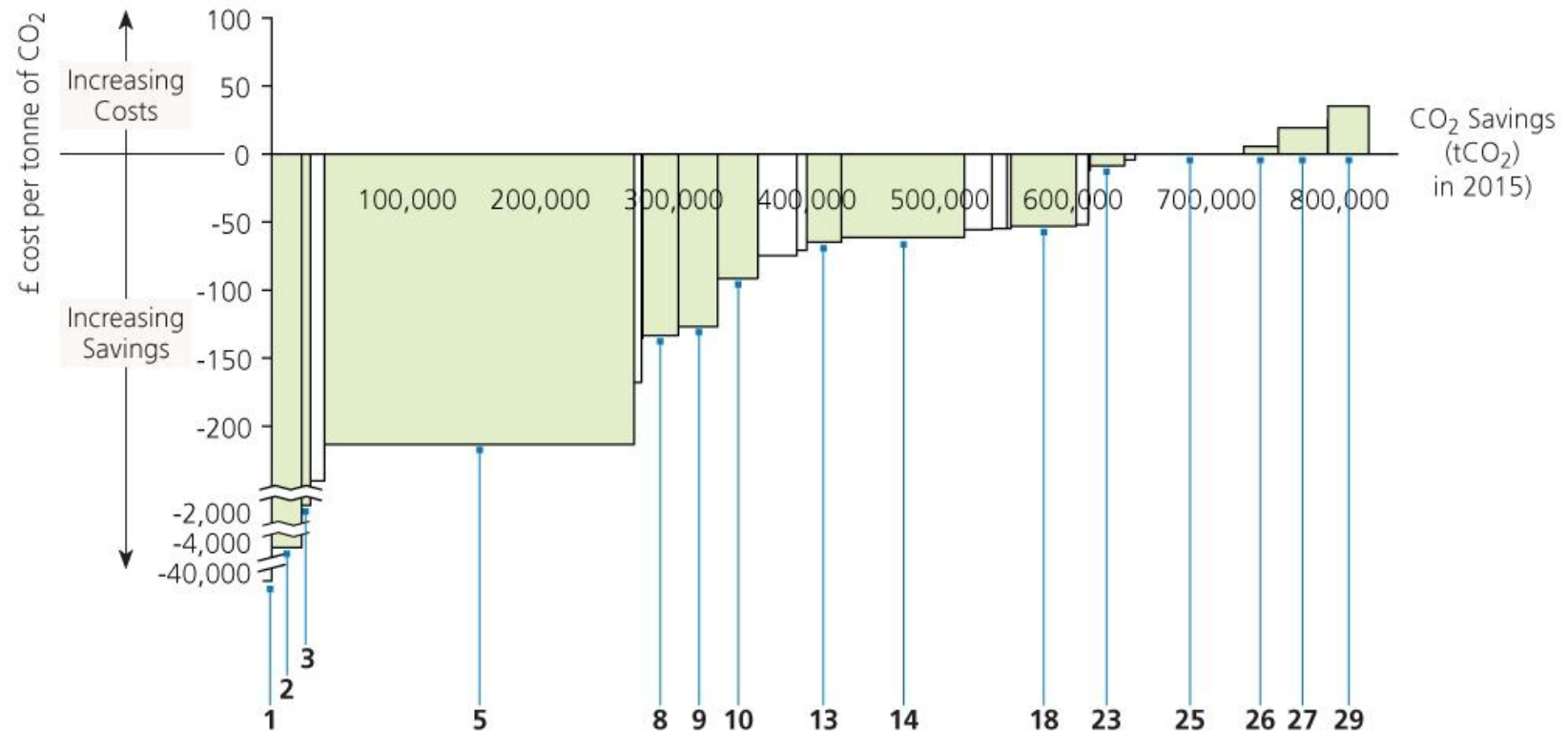
Resilience, business continuity, financial returns

Health System

Aligned with policy direction for most health systems: care closer to home, empowered, ICT supported self care, chronic disease management



NHS MAC curve





Quality, Innovation, Productivity, Prevention and Carbon Reduction

- 1 bedday reduces carbon emissions by ~ 80kg and saves £200
- Estimated 33M (of 55) bed days could be saved in NHS if LoS reduced to national median in 2008/9
- This would save 2.6Mt of CO₂e (~ 10% of NHS carbon footprint)



What do we need to do?



www.sdu.nhs.uk



www.sdu.nhs.uk





Let's get started!

- Board Approved Sustainable Development Management Plan
- Good Corporate Citizenship Assessment Model
- Monitor, Review and Report on Carbon
- Raise carbon awareness at every level



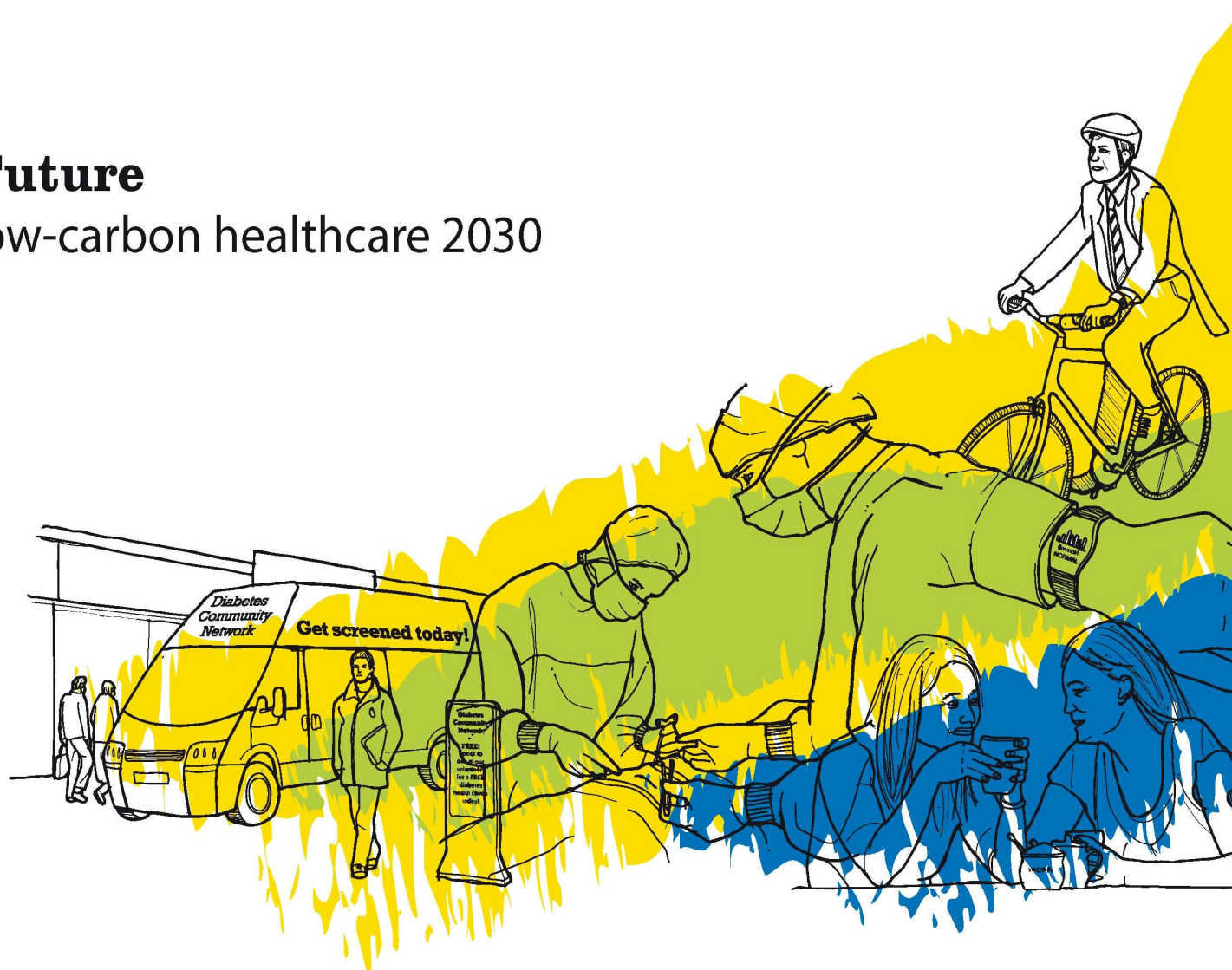
Sustainable Development Unit



Fit for the Future

Scenarios for low-carbon healthcare 2030

September 2009



To a Sustainable Health System

Vision

Measures of Success

Key themes for transformational times

Key themes for turbulent teens

**Energy
Efficiency
and
resilience**

**Focus on
Wellbeing**

**Models of
care**

**Technology
IM&T**

**People and
Leadership**

Must Do's by 2020

From Business as usual



When the winds of change
blow, some people build
walls and others build
windmills

(Chinese proverb)