

# Inspection & Regulation in Early Years 2010

## Striving for Excellence at Every Level

Eve Stickler

Assistant Director – Early Intervention & Access

### Promoting Positive Futures: Strategies for Early Intervention



2009-2010  
Supporting  
independent living  
for disabled adults



**Enfield is strongly committed to ensuring that the children and families in our community have access to relevant and timely prevention and early intervention if they need it.**

*How do we make this happen?*

Enfield's commitment is stated in its Children and Young People's Plan (CYPP) "Promoting Positive Futures".

This sets out the priorities in Enfield in relation to the ECM 5 outcomes, but also defines recurring themes for our work

- Narrowing the gap
- Child Poverty
- **Prevention & Early Intervention**
- Access to Information
- Advice and Guidance
- Safeguarding
- Participation & Involvement

*Definitions within the CYPP*

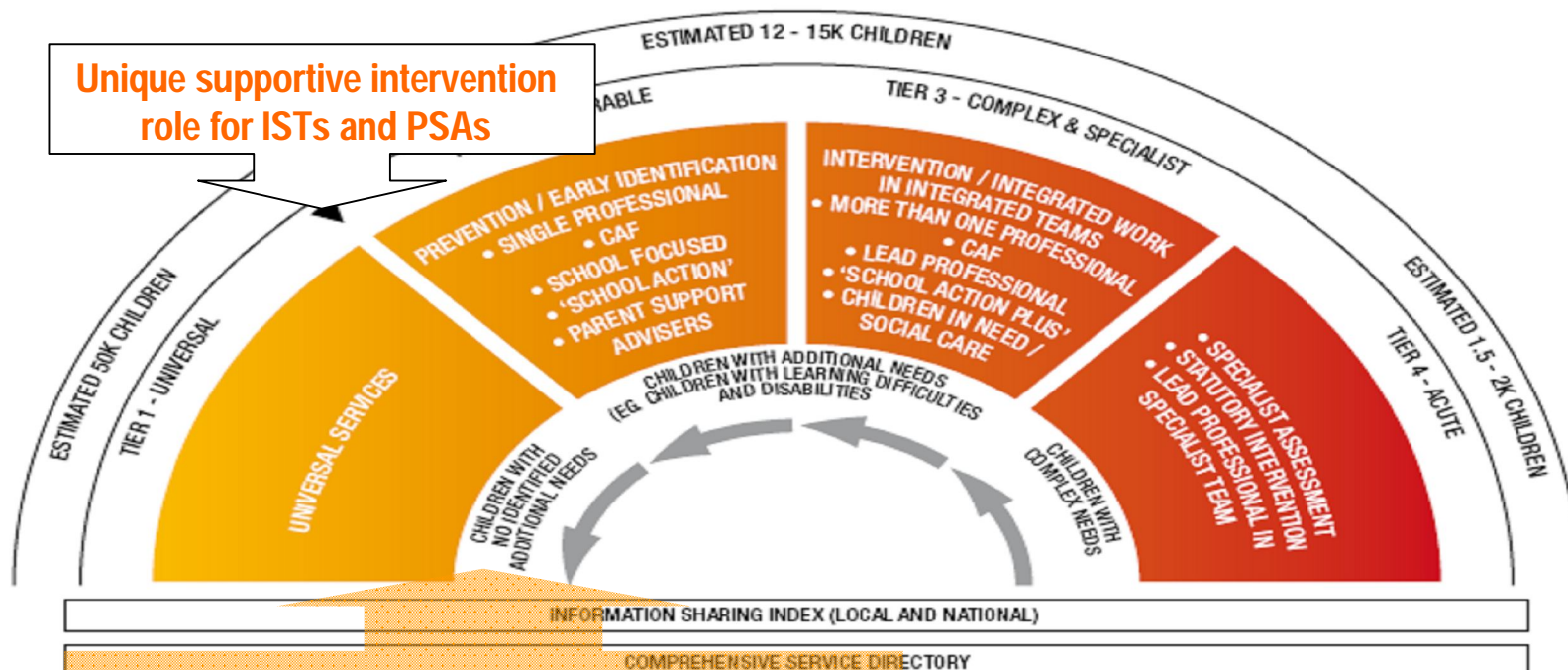
*Prevention: Boosting children's own capacity to avoid developing problems, developing resilience to potential poor outcomes*

*Early Intervention: Intervening as soon as possible to tackle problems that have already emerged*

## What Do We Do? The Strategic Model

Interventions at the earliest points are crucial

- Holistic and partnership approaches
- Support to identify need and appropriate referral routes
- CAF



CACEY Advice & Support, Play & Childcare Dev Teams, Children's Centres, ESAS, Extended Services, OLI & FIPs, EPs & CAMHS, PSAs, BSS Outreach and SSC, School Inclusion Support Team, Youth Support Service, Safer Schools Police, and a host of other partner agencies across sectors.



## Where and How?

- From ante-natal support through to family learning
- Whole family access
- Non stigmatising services
- In the heart of the community
- Whole family and whole place

Ensuring the provision of easily accessible universal services

**Children's Centre Core Offer**

Good quality early learning combined with full day care provision	Child and family health services, including antenatal services	Parental outreach	Family support services	Childminder network	Support for children and parents with special needs	Links with Jobcentre Plus
-------------------------------------------------------------------	----------------------------------------------------------------	-------------------	-------------------------	---------------------	-----------------------------------------------------	---------------------------

**Extended Schools Core Offer**

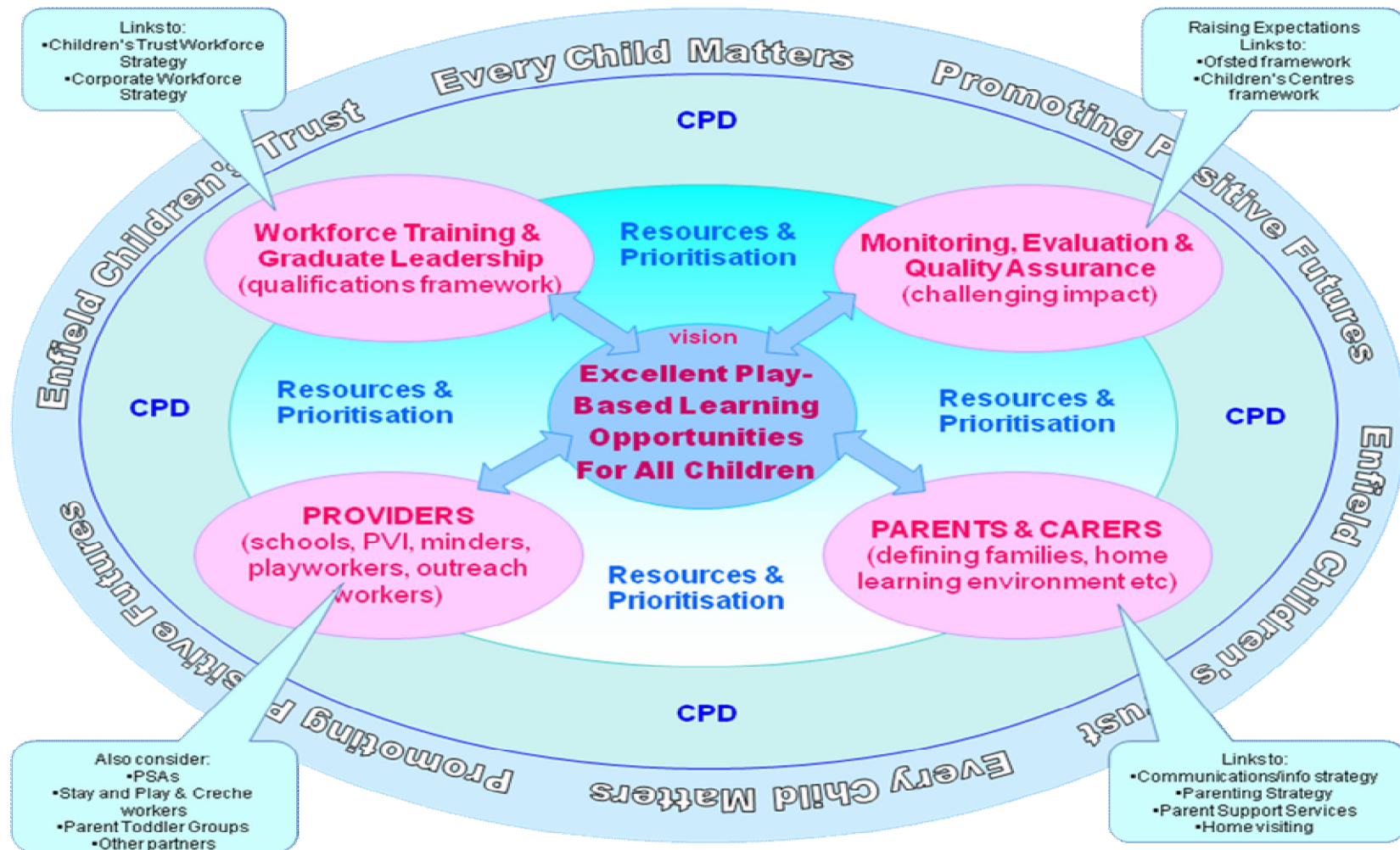
Varied range of activities including study support, sport and music clubs, combined with childcare in primary schools	Parenting and family support	Swift and easy access to targeted and specialist services	Community access to facilities including adult and family learning, ICT and sports grounds
-----------------------------------------------------------------------------------------------------------------------	------------------------------	-----------------------------------------------------------	--------------------------------------------------------------------------------------------

Ensuring the provision of easily accessible universal services

## Quality Services at the Earliest Point of Entry

- Shared principles to underpin good early learning experiences
- Shared commitment to “our” children
- Partnership principles - joint working and common understandings
- Prudent planning, prioritising, resourcing, delivery and evaluation

## Enfield's Early Years Challenge



## Key Features

- Developing the highest quality universal services that work in partnership, with a common understanding of inclusion, need, demand and support.
- Early identification and support, supported transitions, coordinated provision.
- The commitment to “our” children who “we” support.